



# 100 English - Chinese Words Book™



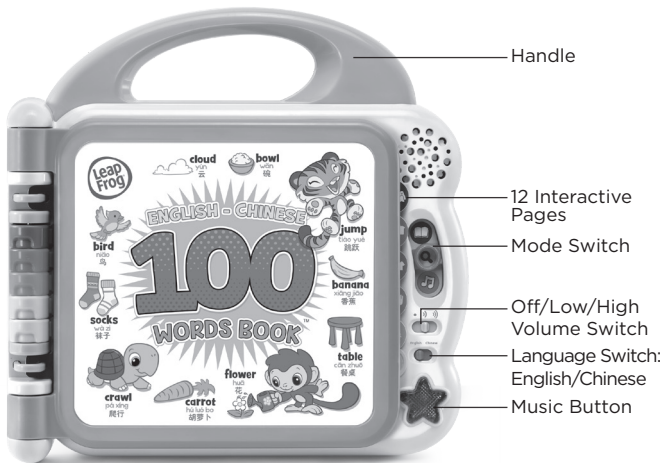
## Parent's Guide

This guide contains important information. Please keep it for future reference.

91-009714-026 AU

## INTRODUCTION

Thank you for purchasing the **English-Chinese 100 Words Book™**. Get ready to explore one hundred words in English and Chinese (Mandarin)! Learn about words in 12 categories, sing along to learning songs and play fun sound effects while building vocabulary—an important skill linked to future reading success.



## INCLUDED IN THIS PACKAGE

- One **English-Chinese 100 Words Book™**
- One parent's guide
- One **Learning Activity Guide**

### **WARNING:**

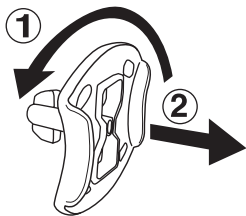
All packing materials such as tape, plastic sheets, packaging locks, removable tags, cable ties and packaging screws are not part of this toy and should be discarded for your child's safety.

### **NOTE:**

Please keep this parent's guide as it contains important information.

### **Unlock the packaging locks:**

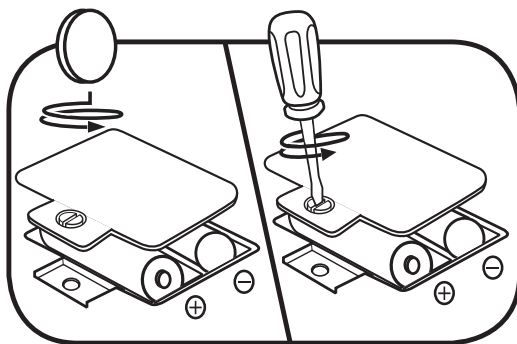
- ① Rotate the packaging lock 90 degrees anticlockwise.
- ② Pull out the packaging lock and discard.



# GETTING STARTED

## BATTERY INSTALLATION

1. Make sure the unit is turned **OFF**.
2. Locate the battery cover on the back of the unit.
3. Use a screwdriver to loosen the screw and open the battery cover.
4. Install 2 new AA (AM-3/LR6) batteries into the battery box as illustrated. (The use of new alkaline batteries is recommended for maximum performance.)
5. Replace the battery cover and tighten the screw to secure.



## BATTERY NOTICE

- Use new alkaline batteries for maximum performance.
- Use only batteries of the same or equivalent type as recommended.
- Do not mix different types of batteries: alkaline, standard (carbon-zinc) or rechargeable, or new and used batteries.
- Do not use damaged batteries.
- Insert batteries with the correct polarity.
- Do not short-circuit the battery terminals.
- Remove exhausted batteries from the toy.
- Remove batteries during long periods of non-use.
- Do not dispose of batteries in fire.
- Do not charge non-rechargeable batteries.
- Remove rechargeable batteries from the toy before charging (if removable).
- Rechargeable batteries are only to be charged under adult supervision.

## Disposal of batteries and product



The crossed-out wheellie bin symbols on products and batteries, or on their respective packaging, indicates they must not be disposed of in domestic waste as they contain substances that can be damaging to the environment and human health.



The chemical symbols Hg, Cd or Pb, where marked, indicate that the battery contains more than the specified value of mercury (Hg), cadmium (Cd) or lead (Pb) set out in Battery Directive (2006/66/EC). The solid bar indicates that the product was placed on the market after 13th August, 2005.

Help protect the environment by disposing of your product or batteries responsibly.

For more information, please visit:

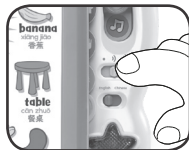
[www.recycle-more.co.uk](http://www.recycle-more.co.uk)

[www.recyclenow.com](http://www.recyclenow.com)

# PRODUCT FEATURES

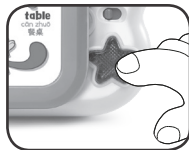
## 1. Off/Low/High Volume Switch

Slide the **Off/Low/High Volume Switch** to turn the unit **ON** and select the volume.



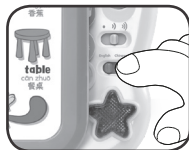
## 2. MUSIC BUTTON

Press the **Music Button** to hear two learning songs in English or in Chinese.



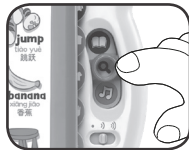
## 3. LANGUAGE SWITCH

Slide the **Language Switch** to hear the book in English or in Chinese.



## 4. MODE SWITCH

Slide the **Mode Switch** to choose Word Mode, Fun Facts Mode or Fun Sounds Mode.



## 5. AUTOMATIC SHUT OFF

To save power, the **English-Chinese 100 Words Book™** automatically shuts down after 30 seconds without input. Open the book or change mode to turn the unit **ON** again.

## ACTIVITIES:

### 1. Word Mode

Slide the **Mode Switch** to the top for Word Mode. Press pictures on the book pages to learn toddler-appropriate words.

### 2. Fun Facts Mode

Slide the **Mode Switch** to the middle position for Fun Facts Mode. Press pictures on the book pages to hear different fun facts about each picture.

### 3. Fun Sounds Mode

Slide the **Mode Switch** to the bottom position for Fun Sounds Mode. Press pictures on the book pages to hear music and sound effects.

### 4. Music

Press the light-up **Music Button** to hear two learning songs.

### 5. Language Play

Slide the English/Chinese **Language Switch** to hear the songs, directions and picture words in English or Chinese.

## CARE & MAINTENANCE

1. Keep the unit clean by wiping it with a slightly damp cloth.
2. Keep the unit out of direct sunlight and away from direct heat sources.
3. Remove the batteries when the unit is not in use for an extended period of time.
4. Avoid dropping it. Never try to dismantle it.
5. Do not drop the unit on a hard surface and do not expose the unit to excess moisture.

## TROUBLESHOOTING

If for some reason the program/activity stops working or the unit can't be turned on again, then please follow these steps:

1. Turn the unit **OFF**.
2. Interrupt the power supply by removing the batteries.
3. Let the unit stand for a few minutes, then replace the batteries.
4. Turn the unit back **ON**. The unit will now be ready to play again.
5. If the unit does not work, replace with an entire set of new batteries.

## Environmental phenomena

The unit may malfunction if subjected to radio-frequency interference. It should revert to normal operation when the interference stops. If not, it may become necessary to turn the power **OFF** and back **ON**, or remove and reinstall the batteries. In the unlikely event of an electrostatic discharge, the unit may malfunction and lose memory, requiring the user to reset the device by removing and reinstalling the batteries.



CLASS 1  
LED PRODUCT



## CONSUMER SERVICES

Creating and developing **LeapFrog®** products is accompanied by a responsibility that we at **LeapFrog®** take very seriously. We make every effort to ensure the accuracy of the information, which forms the value of our products. However, errors sometimes can occur. It is important for you to know that we stand behind our products and encourage you to call our Consumer Services Department with any problems and/or suggestions that you might have. A service representative will be happy to help you.

### **UK Customers:**

Phone: 01702 200244 (from UK) or +44 1702 200244 (outside UK)  
Website: [www.leapfrog.co.uk/support](http://www.leapfrog.co.uk/support)

### **Australian Customers:**

Phone: 1800 862 155  
Website: [support.leapfrog.com.au](http://support.leapfrog.com.au)

### **NZ Customers:**

Phone: 0800 400 785  
Website: [support.leapfrog.com.au](http://support.leapfrog.com.au)

## PRODUCT WARRANTY/ CONSUMER GUARANTEES

### **UK Customers:**

Read our complete warranty policy online at [leapfrog.com/warranty](http://leapfrog.com/warranty).

### **Australian Customers:**

VTECH ELECTRONICS (AUSTRALIA) PTY LIMITED -  
CONSUMER GUARANTEES

Under the Australian Consumer Law, a number of consumer guarantees apply to goods and services supplied by VTech Electronics (Australia) Pty Limited. Please refer to [leapfrog.com/en-au/legal/warranty](http://leapfrog.com/en-au/legal/warranty) for further information.



*Visit our website for more  
information about our products,  
downloads, resources and more.*

*[leapfrog.com](http://leapfrog.com)*

LeapFrog Enterprises, Inc.  
A subsidiary of VTech Holdings Limited.  
TM & © 2018 LeapFrog Enterprises, Inc.  
All rights reserved.  
91-009714-026 