



Prep for Preschool Activity Book™



Instruction Manual

This manual contains important information. Please save it for future reference.

INTRODUCTION

Thank you for purchasing the **Prep for Preschool Activity Book™**! More than 20 activities introduce skills and concepts to help build a foundation for a love of learning. Six touch-sensitive pages and six reusable, erasable marker pages give kids the opportunity to explore letters, letter sounds, numbers, counting, shapes and colours. Mazes, tracing and drawing activities help develop grip control. Practise writing uppercase and lowercase letters, trace shapes and more—then erase the pages and play again!



INCLUDED IN THE PACKAGE

- Prep for Preschool Activity Book™
- Erasable Marker
- Quick Start Guide

WARNING

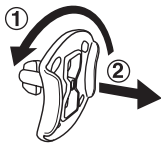
All packing materials such as tape, plastic sheets, packaging locks, removable tags, cable ties, cords and packaging screws are not part of this toy, and should be discarded for your child's safety.

NOTE

Please save this Instruction Manual as it contains important information.

Unlock the Packaging Locks

- ① Rotate the packaging locks 90 degrees anticlockwise.
- ② Pull out the packaging locks and discard.



INSTRUCTIONS

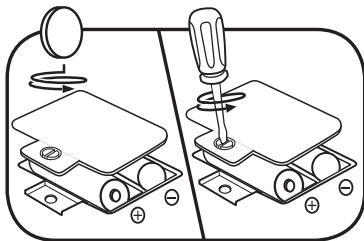
BATTERY REMOVAL AND INSTALLATION

1. Make sure the unit is turned **Off**.
2. Locate the battery cover on the back of the unit. Use a screwdriver to loosen the screw and then open the battery cover.
3. If used batteries are present, remove these batteries from the unit by pulling up on one end of each battery.
4. Install 2 new AA (AM-3/LR6) batteries following the diagram inside the battery box. (For best performance, alkaline batteries or fully charged Ni-MH rechargeable batteries are recommended.)
5. Replace the battery cover and tighten the screw to secure.

WARNING :

Adult assembly required for battery installation.

Keep batteries out of reach of children.



IMPORTANT: BATTERY INFORMATION

- Insert batteries with the correct polarity (+ and -).
- Do not mix old and new batteries.
- Do not mix alkaline, standard (carbon-zinc) or rechargeable batteries.
- Only batteries of the same or equivalent type as recommended are to be used.
- Do not short-circuit the supply terminals.
- Remove batteries during long periods of non-use.
- Remove exhausted batteries from the toy.
- Dispose of batteries safely. Do not dispose of batteries in fire.

RECHARGEABLE BATTERIES

- Remove rechargeable batteries from the toy before charging.
- Rechargeable batteries are only to be charged under adult supervision.
- Do not charge non-rechargeable batteries.

Disposal of batteries and product

The crossed-out wheelie bin symbols on products and batteries, or on their respective packaging, indicates they must not be disposed of in domestic waste as they contain substances that can be damaging to the environment and human health.



The chemical symbols Hg, Cd or Pb, where marked, indicate that the battery contains more than the specified value of mercury (Hg), cadmium (Cd) or lead (Pb) set out in the Batteries and Accumulators Regulation.



The solid bar indicates that the product was placed on the market after 13th August, 2005.

Help protect the environment by disposing of your product or batteries responsibly.

LeapFrog® cares for the planet.

Care for the environment and give your toy a second life by disposing of it at a small electricals collection point so all its materials can be recycled.

In the UK:

Visit www.recyclenow.com to see a list of collection points near you.

In Australia & New Zealand:

Check with your local council for kerbside collections.

PRODUCT FEATURES

1. Off/Low/High Volume Switch

Slide the **Off/Low/High Volume Switch** to turn the unit **On** and choose Low or High volume.



2. Help Button

Touch the **Help Button** to hear hints or repeat questions.



3. Mode Switch

Slide the **Mode Switch** to choose Explore, Learn or Play mode.



4. Erasable Marker

Use the included **Erasable Marker** for activities on pages with the marker icon. Wipe-clean pages let kids practise tracing shapes and letters, solve mazes, draw and match numbers.



Note:

Use of the **Erasable Marker** will not trigger touch sensors.

Dry with a dry cloth, and do it all over again!

5. Automatic Shut-Off

To save power, the unit automatically shuts down after 60 seconds without input. Open the book, turn the page, press the help button or change the mode to turn the unit on again.

ACTIVITIES

1. Explore Mode

Slide the **Mode Switch** to the left position for Explore mode. Touch pictures on the book pages to hear letter names and sounds, numbers and quantities, colours, counting, shapes and rhyming words. Touch the Green or Orange Star icon at the top of the page to begin an activity.



2. Learn Mode

Slide the **Mode Switch** to the middle position for Learn mode. Touch the Star icon on the book pages to start learning activities and games.

3. Play Mode

Slide the **Mode Switch** to the right position for Play mode. Touch the Star icon on the book pages to play fun learning games.

Note: Be sure to use your finger on touch-sensitive pages for best performance.

CARE & MAINTENANCE

1. Keep the unit clean by wiping it with a slightly damp cloth.
2. Keep the unit out of direct sunlight and away from any direct heat sources.
3. Remove the batteries if the unit will not be in use for an extended period of time.
4. Do not drop the unit on hard surfaces and do not expose the unit to moisture or water.

TROUBLESHOOTING

If for some reason the unit stops working or malfunctions, please follow these steps:

1. Please turn the unit **Off**.
2. Interrupt the power supply by removing the batteries.
3. Let the unit stand for a few minutes, then replace the batteries.
4. Turn the unit back **On**. The unit should now be ready to use again.
5. If the unit still does not work, install a new set of batteries.

Environmental Phenomena

The unit may malfunction if subjected to radio-frequency interference. It should revert to normal operation when the interference stops. If not, it may become necessary to turn the power **Off** and back **On**, or remove and reinstall the batteries. In the unlikely event of an electrostatic discharge, the unit may malfunction and lose memory, requiring the user to reset the device by removing and reinstalling the batteries.

CONSUMER SERVICES

Creating and developing **LeapFrog®** products is accompanied by a responsibility that we at **LeapFrog®** take very seriously. We make every effort to ensure the accuracy of the information, which forms the value of our products. However, errors sometimes can occur. It is important for you to know that we stand behind our products and encourage you to call our Consumer Services Department with any problems and/or suggestions that you might have. A service representative will be happy to help you.

UK Customers:

Phone: 01702 200244 (from UK) or +44 1702 200244 (outside UK)

Website: www.leapfrog.co.uk/support

Australian Customers:

Phone: 1800 862 155

Website: support.leapfrog.com.au

NZ Customers:

Phone: 0800 400 785

Website: support.leapfrog.com.au

PRODUCT WARRANTY/ CONSUMER GUARANTEES

UK Customers:

Read our complete warranty policy online at leapfrog.com/warranty.

Australian Customers:

VTECH ELECTRONICS (AUSTRALIA) PTY LIMITED –
CONSUMER GUARANTEES

Under the Australian Consumer Law, a number of consumer guarantees apply to goods and services supplied by VTech Electronics (Australia) Pty Limited. Please refer to leapfrog.com/en-au/legal/warranty for further information.



*Visit our website for more
information about our products,
downloads, resources and more.*

leapfrog.com

LeapFrog Enterprises, Inc.
A subsidiary of VTech Holdings Limited.
TM & © 2022 LeapFrog Enterprises, Inc.
All rights reserved.
Printed in China.
IM-614900-001
Version:0