



Clean Sweep Learning Caddy™



Instruction Manual

This manual contains important information. Please save it for future reference.

INTRODUCTION

Thank you for purchasing the Clean Sweep Learning Caddy™! Mop, sweep, spray and wipe as you boogie to the music. Cleaning and counting has never been so much fun!



INCLUDED IN THE PACKAGE

- Clean Sweep Learning Caddy™



Bucket base



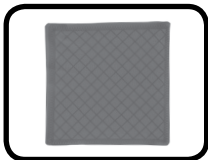
Green bucket ring



Spray bottle



2 mop pieces



Cloth



Dust pan



Dust broom

- Quick Start Guide

WARNING

All packing materials such as tape, plastic sheets, packaging locks, removable tags, cable ties, cords and packaging screws are not part of this toy, and should be discarded for your child's safety.

NOTE

Please save this Instruction Manual as it contains important information.

ATTENTION

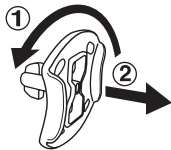
Pour la sécurité de votre enfant, débarrassez-vous de tous les produits d'emballage tels que rubans adhésifs, feuilles de plastique, attaches, étiquettes, cordons et vis d'emballage. Ils ne font pas partie du jouet.

NOTE

Il est conseillé de sauvegarder ce manuel d'utilisation car il comporte des informations importantes.

Unlock the Packaging Locks

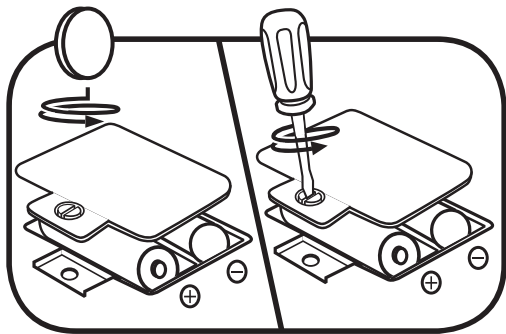
- ① Rotate the packaging locks 90 degrees counterclockwise.
- ② Pull out the packaging locks and discard.



GETTING STARTED

BATTERY REMOVAL AND INSTALLATION

1. Make sure the unit is turned **Off**.
2. Find the battery cover located on the bottom of the unit, use a screwdriver or coin to loosen the screw, and then open the battery cover.
3. Install 2 new AA (AM-3/LR6) batteries following the diagram inside the battery box. (For best performance, alkaline batteries or fully charged Ni-MH rechargeable batteries are recommended.)
4. Replace the battery cover and tighten the screw to secure.





WARNING:

Adult assembly required for battery installation.
Keep batteries out of reach of children.



ATTENTION :

Les piles ou accumulateurs doivent être installés par un adulte. Tenir les piles ou accumulateurs hors de portée des enfants.

IMPORTANT: BATTERY INFORMATION

- Insert batteries with the correct polarity (+ and -).
- Do not mix old and new batteries.
- Do not mix alkaline, standard (carbon-zinc) or rechargeable batteries.
- Only batteries of the same or equivalent type as recommended are to be used.
- Do not short-circuit the supply terminals.
- Remove batteries during long periods of non-use.
- Remove exhausted batteries from the toy.
- Dispose of batteries safely. Do not dispose of batteries in fire.

RECHARGEABLE BATTERIES

- Remove rechargeable batteries (if removable) from the toy before charging.
- Rechargeable batteries are only to be charged under adult supervision.
- Do not charge non-rechargeable batteries.

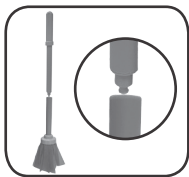
ASSEMBLY

With the **Leapfrog® Clean Sweep Learning Caddy™** safety comes first. To ensure your child's safety, adult assembly is required. Once assembled, the unit cannot be disassembled.

1. Click the green ring onto the bucket.



2. Snap the top and bottom halves of the broom together. You will hear a click when they are firmly connected.




NOTE

If the unit powers down or if the light fades out during play, please install a new set of batteries.

PRODUCT FEATURES

1. On/Off/Mode Selector

Slide to choose between Colors and Counting 123, Dance and Clean 1 2 3, and Pretend ★ modes. Slide the **On/Off/Mode Selector** to Off  to turn the toy off.



2. Soap Pump

Push down on the **Soap Pump** to hear silly sounds and learning phrases.



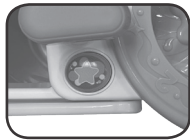
3. Foot Pedal

Insert the **Mop** into the **Bucket**, then step on the **Foot Pedal** to trigger the **Bucket's** spinning action and sound effects.



4. Star Button

Press the **Star Button** to initiate energetic learning, dancing and pretend play activities.



ACTIVITIES

1. Colors and Counting Mode

Move the **On/Off/Mode Selector** to the number icons 1, 2, 3 to hear goofy chore scenarios. Find the correct cleaning tools based on the color descriptions, then groove to one of three learning songs as you sweep, mop, spray and wipe.

Pressing the **Soap Pump** or **Foot Pedal** in this mode allows you to hear funny sounds and explore counting.



2. Dance and Clean Mode

Move the **On/Off/Mode Selector** to the music notes 1, 2, 3 to start one of the three dance-and-clean songs. Follow the directions as you hop, spin, clap and count! Pressing the **Soap Pump** in this mode plays fun sounds and learning phrases. Pressing the **Foot Pedal** plays spinning sounds and learning songs.



3. Pretend Mode

Move the **On/Off/Mode Selector** to the star icon ★ to receive kooky pretend play scenarios. Boogie to the music and let your imagination run wild as you complete nutty pretend tasks. Pressing the **Soap Pump** or **Foot Pedal** in this mode plays fun sounds and phrases.



SONG LYRICS

Song 1

Do some chores!
Join the club!
It's time to clean!
A scrub-a-dub-dub!

Song 2

Clean up, clean up - hooray, hooray!
Everyone helps - every day!

Song 3

The cloth is red and the mop is green!
The bottle is purple; now it's time to clean!

Song 4

OK! Let's mop!
Mop to the left.
Mop to the right.
Mop all day!
Mop all night!
Hop three times!
Boogie, boogie, boogie!
Boogie, boogie, boogie!
Boogie on down,
Yeah, boogie on down!
Mop up!
Mop down!
Mop fast!
Turn around!
And freeze! ALL clean!
I'm outta here!

Song 5

OK! Let's sweep!
Sweep to the left.
Boogie to the right.
Sweep all day!
Boogie all night!
Clap three times!
Boogie, boogie, boogie!
Boogie, boogie, boogie!
Boogie on down,
Yeah, boogie on down!
Sweep up!
Boogie down!
Sweep slow!
Turn around!
And freeze! ALL clean!
I'm outta here!

Song 6

OK! Let's wipe!
Wipe to the left.
Wipe to the right.
Boogie all day!
Boogie all night!
Stomp three times!
Boogie, boogie, boogie!
Boogie, boogie, boogie!
Boogie on down,
Yeah, boogie on down!
Wipe up!
Wipe down!
Wipe slow!
Turn around!
And freeze! ALL clean!
I'm outta here!

CARE & MAINTENANCE

1. Keep the toy and accessories clean by wiping them with a slightly damp cloth.
2. Enjoy pretend cleaning, but do not use with real water.
3. Keep the unit out of direct sunlight and away from direct heat sources.
4. Remove the batteries if the unit will not be in use for an extended period of time.
5. Do not drop the unit on hard surfaces and do not expose the unit to moisture or water.

TROUBLESHOOTING

If for some reason the unit stops working or malfunctions, please follow these steps:

1. Turn the unit **Off**.
2. Interrupt the power supply by removing the batteries.
3. Let the unit stand for a few minutes, then replace the batteries.
4. Turn the unit back **On**. The unit should now be ready to use again.
5. If the unit still does not work, install a new set of batteries.

IMPORTANT NOTE:

If the problem persists, please call our **Consumer Services Department** at **1-800-701-5327** in the U.S. and Canada, or email **support@leapfrog.com**. Creating and developing LeapFrog products is accompanied by a responsibility that we take very seriously. We make every effort to ensure the accuracy of the information, which forms the value of our products. However, errors sometimes can occur. It is important for you to know that we stand behind our products and encourage you to contact us with any problems and/or suggestions you might have. A service representative will be happy to help you.

Environmental Phenomena

The unit may malfunction if subjected to radio-frequency interference. It should revert to normal operation when the interference stops. If not, it may become necessary to turn the power **off** and back **on**, or remove and reinstall the batteries. In the unlikely event of an electrostatic discharge, the unit may malfunction and lose memory, requiring the user to reset the device by removing and reinstalling the batteries.

Impact de l'environnement

Une défaillance de fonctionnement de l'appareil peut survenir s'il est sujet à des interférences avec les fréquences radioélectriques. Le fonctionnement normal de l'appareil devrait reprendre avec l'arrêt des interférences. Si ce n'est pas le cas, il peut s'avérer nécessaire d'éteindre et rallumer l'appareil ou de retirer et réinstaller les piles. Dans l'éventualité peu probable d'une décharge électrostatique, un mauvais fonctionnement et une perte de mémoire de l'appareil peuvent se produire. L'utilisateur doit alors retirer et réinstaller les piles pour réinitialiser l'appareil.

CAUTION

Changes or modifications not expressly approved by the party responsible for compliance could void the user's authority to operate the equipment.

NOTE

This equipment has been tested and found to comply with the limits for a Class B digital device, pursuant to Part 15 of the FCC Rules. These limits are designed to provide reasonable protection against harmful interference in a residential installation. This equipment generates, uses and can radiate radio frequency energy and, if not installed and used in accordance with the instructions, may cause harmful interference to radio communications. However, there is no guarantee that interference will not occur in a particular installation. If this equipment does cause harmful interference to radio or television reception, which can be determined by turning the equipment off and on, the user is encouraged to try to correct the interference by one or more of the following measures:

- Reorient or relocate the receiving antenna.
- Increase the separation between the equipment and receiver.
- Connect the equipment into an outlet on a circuit different from that to which the receiver is connected.
- Consult the dealer or an experienced radio/TV technician for help.

Supplier's Declaration of Conformity

47 CFR § 2.1077 Compliance Information

Trade Name: LeapFrog®
Model: 6158
Product Name: Clean Sweep Learning Caddy™
Responsible Party: LeapFrog Enterprises, Inc.
Address: 2200 Powell St., Suite 500
Emeryville, CA 94608
Website: leapfrog.com

THIS DEVICE COMPLIES WITH PART 15 OF THE FCC RULES. OPERATION IS SUBJECT TO THE FOLLOWING TWO CONDITIONS: (1) THIS DEVICE MAY NOT CAUSE HARMFUL INTERFERENCE, AND (2) THIS DEVICE MUST ACCEPT ANY INTERFERENCE RECEIVED, INCLUDING INTERFERENCE THAT MAY CAUSE UNDESIRE OPERATION.



**Visit our website for more
information about our products,
downloads, resources and more.**

leapfrog.com

leapfrog.ca

Read our complete warranty policy online at

leapfrog.com/legal

LeapFrog Enterprises, Inc.,
A subsidiary of VTech Holdings Limited.
TM & © 2022 LeapFrog Enterprises, Inc.
All rights reserved.

IM-615800-000

Version:1