



MAGIC ADVENTURES MICROSCOPE™



Instruction Manual




This manual contains important information. Please keep it for future reference.

INTRODUCTION

Thank you for purchasing **Magic Adventures Microscope™!** Explore microworlds across various topics including flowers, insects, the human body and more with videos, images, games and learning challenges. Create your own slides or place larger samples on the tray to discover even more on this real microscope!



*microSD card is not included.

	Real Microscope Function		BBC Content
	Sample Thickness	Magnification Level	
Slides Tray	Reusable Slide A 	Up to 1mm Example: Cloth, Paper, Onion Peel, Leaf, Hair, Flower Petal, etc.	Smart Slide 
	Reusable Slide B 	Up to 5mm Example: Tree Bark, Cookie Crumb, Pebble, Egg Shell, etc.	
Large Sample Tray	No Slide is Needed	Up to 40mm Example: Walnut Shell, Sea Shell, Coin, Rock, etc.	Up to 200x (with digital zoom)

INCLUDED IN THE PACKAGE

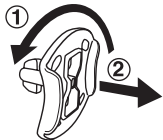
- **Magic Adventures Microscope™**
- 9 double-sided smart slides
- 2 reusable slides
- 1 Quick Start Guide

WARNING

All packing materials such as tape, plastic sheets, packaging locks, removable tags, cable ties, cords and packaging screws are not part of this toy, and should be discarded for your child's safety.

NOTE

Please save this Instruction Manual as it contains important information.



Unlock the Packaging Locks

- ① Rotate the packaging locks 90 degrees anticlockwise.
- ② Pull out the packaging locks and discard.

GETTING STARTED



Please cut and discard the cords before playing with the unit. The cords are not part of the product and should be discarded for your child's safety.

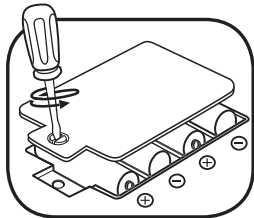
Attention: The unit is in Try-Me mode. To exit this mode, follow the steps below:

1. Press the **Power Button** or the **Tick Button** to turn on the unit.
2. Remove the existing **Smart Slide** from the unit when the Try-Me video begins playing.
3. Insert any other **Smart Slide** during the Try-Me video.
4. If the Try-Me mode has been successfully turned off, the screen will go to the Main Menu. If the screen doesn't go to the Main Menu, repeat steps 1-3.

INSTRUCTIONS

Battery Removal and Installation

1. Make sure the unit is turned **OFF**.
2. Locate the battery cover on the bottom of the unit. Use a screwdriver to loosen the screw and open the battery cover.
3. If used batteries are present, remove these batteries from the unit by pulling up on one end of each battery.
4. Install 4 new AA (AM-3/LR6) batteries following the diagram inside the battery box. (For best performance, alkaline batteries or fully charged Ni-MH rechargeable batteries are recommended.)
5. Replace the battery cover and tighten the screw to secure.



WARNING:

Adult assembly required for battery installation.
Keep batteries out of reach of children.

IMPORTANT: BATTERY INFORMATION

- Insert batteries with the correct polarity (+ and -).
- Do not mix old and new batteries.
- Do not mix alkaline, standard (carbon-zinc) or rechargeable batteries.
- Only batteries of the same or equivalent type as recommended are to be used.
- Do not short-circuit the supply terminals.
- Remove batteries during long periods of non-use.
- Remove exhausted batteries from the toy.
- Dispose of batteries safely. Do not dispose of batteries in fire.

RECHARGEABLE BATTERIES:

- Remove rechargeable batteries from the toy before charging.
- Rechargeable batteries are only to be charged under adult supervision.
- Do not charge non-rechargeable batteries.

Disposal of batteries and product



The crossed-out wheellie bin symbols on products and batteries, or on their respective packaging, indicates they must not be disposed of in domestic waste as they contain substances that can be damaging to the environment and human health.

The chemical symbols Hg, Cd or Pb, where marked, indicate that the battery contains more than the specified value of mercury (Hg), cadmium (Cd) or lead (Pb) set out in the Batteries and Accumulators Regulation.



The solid bar indicates that the product was placed on the market after 13th August, 2005.

Help protect the environment by disposing of your product or batteries responsibly.

LeapFrog® cares for the planet.

Care for the environment and give your toy a second life by disposing of it at a small electricals collection point so all its materials can be recycled.

In the UK:

Visit www.recyclenow.com to see a list of collection points near you.

In Australia & New Zealand:

Check with your local council for kerbside collections.

PRODUCT FEATURES

1. Power Button

Press the **Power Button** to switch the **Magic Adventure Microscope™** on or off.

- It may take up to 3 seconds for the device to power on if an SD card is inserted.

- Hold down the **Power Button** for approximately 1 second to switch the device off.

2. D-Pad

Press the **D-Pad** to select an item on the Menu screen. While in Microscope Mode or while viewing a **Smart Slide** image, press the **D-Pad** to explore areas that aren't visible on the screen. While playing the Micro Adventure game, press the **D-Pad** to move around the screen.

3. Tick Button

Press the **Tick Button** to make a selection on a menu, to take screen captures in Microscope Mode, or to interact with on-screen characters in the Micro Adventure games.

4. Help Button

Press the **Help Button** to hear hints and instructions.

5. Back Button

Press the **Back Button** to return to the previous screen.

6. Microscope Mode Button

Press the **Microscope Mode Button** to enter the Microscope Mode and explore your own samples using the **Reusable Slides** or the **Large Sample Tray**. When a **Smart Slide** is inserted into the device, press the **Microscope Mode Button** to toggle back and forth between the Smart Slide Menu and the Main Menu.

7. Zoom Dial

Turn the **Zoom Dial** to move the camera closer or further away from the sample while in Microscope Mode. When viewing a **Smart Slide** image, turn the **Zoom Dial** to switch between different images and to focus the image on the screen.



8. Magnification Button

While in Microscope Mode or while viewing a **Smart Slide** image, press the **Magnification Button** for a closer look at the image on the screen.

9. Light Adjustment Button

While in Microscope Mode, press the **Light Adjustment Button** to adjust the brightness of the light.

10. Volume Control Button

Press the **Volume Control Button** to adjust the volume. Press the  button to lower the volume, and the  button to increase the volume.

11. Slides Tray

Insert **Smart Slides** and **Reusable Slides** into the **Slides Tray**.

12. Large Sample Tray

Place larger objects in the **Large Sample Tray** to view them in Microscope Mode.

13. Smart Slides

Insert **Smart Slides** into the slot located in the **Slides Tray** to explore different scientific topics, images and videos.

14. Reusable Slides

Place your own samples into the **Reusable Slides**, then place the **Reusable Slides** into the **Slides Tray**. Press the **Microscope Mode Button** to view your sample with the microscope.

15. Take Photos

Capture about 100 photos of your samples in Microscope Mode by pressing the **Tick Button**.

NOTE: This number will vary depending on the number of colours in the photo. Photos with more colours take up more memory, whereas photos with fewer colours take up less memory.

16. microSD Card Slot

Use the **microSD Card Slot** to insert a microSD card (not included) and save more photos. You can also copy saved photos from the microscope's internal memory to your computer using a microSD card. See details in the Gallery section.

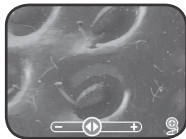
TO BEGIN PLAYING

Press the **Power Button** or the **Tick Button** to turn on the unit.

Microscope Mode

Press the **Microscope Mode Button** or select Microscope Mode from the main menu to explore your own samples using the **Reusable Slides** or the **Large Sample Tray**. The following functions are available in Microscope Mode:

- Use the **D-Pad** to scroll across the different areas of the image on the screen.
- Turn the **Zoom Dial** to bring the camera closer or further from the sample to adjust the zoom.
- Press the **Magnification Button** for digital magnification for a closer look.
- Press the **Light Adjustment Button** to



adjust the brightness of the sample light.

- Press the **Tick Button** to take photos of what's displayed on the screen.

microSD card slot

- If no microSD card is inserted into the device, photos will be saved to the unit's internal memory, which can hold about 100 images.

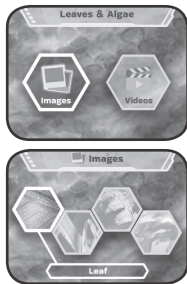
NOTE: This number will vary depending on the number of colours in the photo. Photos with more colours take up more memory, whereas photos with fewer colours take up less memory.

- If a microSD card (not included) is inserted into the **microSD Card Slot**, all photos taken will be saved to the microSD card. The **Magic Adventures Microscope™** supports microSD cards up to 32GB.
- The maximum number of photos that can be taken is 30,096. If more than 30,096 pictures are taken, the device will overwrite existing photos with the same file name.
- Removing the microSD card or powering off the unit while taking a photo, deleting a photo, overwriting an existing photo, or while transferring a photo to the microSD card may cause the unit to freeze or result in the creation of corrupted photos. Corrupted photos will be displayed with an error icon (X) in the Gallery.

Smart Slides

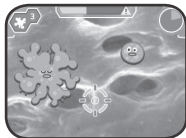
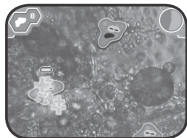
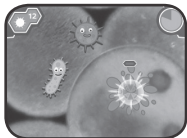
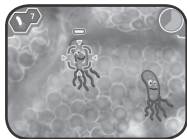
Insert a **Smart Slide** to explore educational content with videos and images.

- Select Images from the Smart Slide Menu to explore educational images with fun facts. Use the **D-Pad** and **Zoom Dial** to view the images and explore.
- Select Videos from the Smart Slide Menu to view educational videos. Videos will automatically play when selected from the menu.



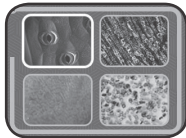
Micro Adventure Game

Beat the clock in this exciting microworld adventure game. Feed, protect, heal microorganisms and remove micro-invaders in 24 exciting levels.



What's This? Quiz

See if you can figure out what each image is in this fun quiz. Listen to the question and then select the picture that provides the answer.



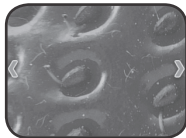
Gallery

Photos taken of samples in Microscope Mode can be found here.

You can also delete* saved photos in the Gallery.

*While deleting photos, do not remove the microSD card or power off the unit. Doing so may corrupt the photos or cause the unit to freeze. Corrupted photos will be displayed in the Gallery with an error icon (X).

If the microSD card has a large number of saved photos, it is normal for the deletion process to take longer.



How to Copy Saved Photos from the Microscope to a Computer

1. Insert a microSD card** into the **microSD Card Slot** of the unit.
2. In the Gallery, select the Photo Transfer icon to transfer all of your saved photos from the unit's internal memory to the inserted microSD card.
3. After the photo transfer is completed***, take the microSD card out of the unit and insert it into a computer.
4. The saved photos**** are located in the microSD card's folder **#MICRO/DCIM/XXXMICRO**. XXX is a three-digit number from 100 to 403 that will be assigned to the folder name.
5. Copy the folder **XXXMICRO** directly to the computer. DO NOT cut and paste the files individually from this folder.

**The unit supports microSD cards up to 32GB (not included).

***During the photo transfer process, do not remove the microSD card or power off the unit. Doing so may corrupt the transferring photo or cause the unit to freeze. Corrupted photos will be displayed in the Gallery with an error icon (X).

****The saved photos will display a time and date that is not accurate, since the device does not have an internal clock.

NOTE

- Do not rename, edit or delete the folder **#MICRO** or any of its sub-folders.
- Do not add any folders to the folder **#MICRO** or any of its sub-folders.
- Do not rename, edit or delete any files in the folder **#MICRO** or any of its sub-folders.
- Do not add any files to the folder **#MICRO** or any of its sub-folders.

If a microSD card is inserted into the device with renamed, edited, deleted, or added folders or files, the Gallery may exhibit the following unexpected behaviors:

- Some saved photos may not be displayed.
- Some saved photos may be displayed with an error icon (X).
- The display order of the saved photos may be incorrect. New photos that are taken while in Microscope Mode may not be displayed on the first page of the Gallery.
- The thumbnails and the full-screen photos may not match each other.

This may also cause unexpected behavior when trying to take more photos while in Microscope Mode:

- The device may request to overwrite existing photos that share the same filename as the new photo being taken.

Parent Menu

A Parent Menu is available in case parents need to reset the device or reformat it. Below are the Parent Menu options.

- Option 1: Reset all curricular and game progress data.
- Option 2: Remove all Gallery photos stored on the device.
- Option 3: Reformat the internal storage on the device. All curricular and game progress data will be reset, and the Gallery photos stored on the device will be removed.





Warning: All of the actions listed above cannot be reversed once initiated.

The Parent Menu can be accessed by pressing the following sequence of buttons while viewing the Main Menu:

Up, Volume Up, Down, Volume Down, Help, Help, hold Back Button for more than 3 seconds

Battery Status

When the batteries are almost depleted, a low battery icon  will flash on the **LCD Screen**. Please replace the batteries immediately when this icon appears. The unit may automatically power off if the batteries are not replaced soon after the low battery icon  appears.

Automatic Shut-Off

To preserve battery life, the **Magic Adventures Microscope™** will automatically dim the **LCD Screen** after approximately three minutes without input, then power down after approximately six minutes without input. Press any button before the device shuts off to return the **LCD Screen** to its normal brightness level. Once the unit is powered down, press the **Power Button** or the **Tick Button** to power it back on again.

TROUBLESHOOTING

Problem	Possible Solution(s)
The unit stopped working.	<p>(1) Press and hold the Power Button for more than 10 seconds.</p> <p>(2) Release the Power Button and the unit will power back on again. It should now work properly.</p> <p>(3) If the unit does not work, change the batteries and press the Power Button to turn on the unit.</p>
Screen is not working correctly.	<p>(1) Press and hold the Power Button for more than 10 seconds.</p> <p>(2) Release the Power Button and the unit will power back on again. It should now work properly.</p>
The Smart Slide inserted is not recognised.	<p>Make sure the Smart Slide is the only object in the slot, and that it is fully inserted. It should be firmly placed on the Slides Tray.</p> <p>Make sure there is nothing in the teeth of the Smart Slide.</p>

<p>Microscope Mode (without microSD card inserted) - Save Failed when taking photos</p>	<p>Restart the unit by pressing the Power Button and try again.</p> <p>(1) Enter the Parent Menu (see the Parent Menu section for how to access this screen).</p> <p>(2) Select Option 2 and confirm. Once the process is finished, it should be okay to take photos while in Microscope Mode.</p> <p>(3) If it still isn't working correctly, select Option 3 in the Parent Menu and confirm.</p> <p>NOTE: Options 2 and 3 in the Parent Menu will remove all the saved photos from the internal memory. Please backup any wanted photos by transferring them to a microSD card first. After the photo transfer is complete, remove the microSD card. See the Gallery section for how to transfer photos to the microSD card.</p>
<p>Microscope Mode (with microSD card inserted) - Memory Card Error or Save Failed when taking photos</p>	<p>Make sure the microSD card is not larger than 32GB.</p> <p>Format the microSD card in your computer and try again.</p> <p>NOTE: All the files from the microSD card will be removed. Please backup any wanted photos by transferring them to a computer first.</p>

<p>Microscope Mode (without microSD card inserted) - An overwrite prompt appears every time a photo is taken</p>	<p>(1) Enter the Parent Menu (see the Parent Menu section for how to access this screen).</p> <p>(2) Select Option 2 and confirm. Once the process is finished, the overwrite prompt should no longer appear every time a photo is taken.</p> <p>NOTE: Option 2 in the Parent Menu will remove all the saved photos from the internal memory. Please backup any wanted photos by transferring them to a microSD card first. After the photo transfer is complete, remove the microSD card. See the Gallery section for how to transfer photos to a microSD card.</p>
<p>Microscope Mode (with microSD card inserted) - An overwrite prompt appears every time a photo is taken</p>	<p>Use a different microSD card that does not contain any previously saved photos from the microscope.</p> <p>(1) Enter the Parent Menu (see the Parent Menu section for how to access this screen).</p> <p>(2) Select Option 2 and confirm. Once the process is finished, the overwrite prompt should no longer appear every time a photo is taken.</p> <p>NOTE: Option 2 in the Parent Menu will remove all the saved photos from the internal memory. Please backup any wanted photos by transferring them to a microSD card first. After the photo transfer is complete, remove the microSD card. See the Gallery section for how to transfer photos to a microSD card.</p>

<p>Gallery - Photo Transfer Failed</p>	<p>Make sure the microSD card is not larger than 32GB.</p> <p>Format the microSD card in your computer and try again.</p> <p>NOTE: All the files from the microSD card will be removed. Please backup any wanted photos by transferring them to a computer first.</p>
<p>Gallery (without microSD card inserted) - New photos taken in Microscope Mode are not displayed on the first page of the Gallery</p>	<p>(1) Enter the Parent Menu (see the Parent Menu section for how to access this screen).</p> <p>(2) Select Option 2 and confirm. Once the process is finished, new photos taken in Microscope Mode should be displayed on the first page of the Gallery.</p> <p>NOTE: Option 2 in the Parent Menu will remove all the saved photos from the internal memory. Please backup any wanted photos by transferring them to a microSD card first. After the photo transfer is complete, remove the microSD card. See the Gallery section for how to transfer photos to a microSD card.</p>

<p>Gallery (with microSD card inserted) - New photos taken in Microscope Mode are not displayed on the first page of the Gallery</p>	<p>Use a different microSD card that does not contain any previously saved photos from the microscope.</p> <p>(1) Enter the Parent Menu (see the Parent Menu section for how to access this screen).</p> <p>(2) Select Option 2 and confirm. Once the process is finished, new photos taken in Microscope Mode should be displayed on the first page of the Gallery.</p> <p>NOTE: Option 2 in the Parent Menu will remove all the saved photos from the internal memory. Please backup any wanted photos by transferring them to a microSD card first. After the photo transfer is complete, remove the microSD card. See the Gallery section for how to transfer photos to a microSD card.</p>
<p>Gallery is always inaccessible or freezes</p>	<p>Remove the microSD card (if inserted).</p> <p>If a microSD card is being used,</p> <ul style="list-style-type: none"> - Use a different microSD card that does not contain any previously saved photos from the microscope. - Format the microSD card on your computer and try again. <p>NOTE: All the files from the microSD card will be removed when it is formatted on your computer. Please backup any wanted photos onto your computer first if needed.</p> <p>(1) Enter the Parent Menu (see the Parent Menu section for how to access this screen).</p> <p>(2) Select Option 2 and confirm. Once the process is finished, the Gallery should be accessible.</p> <p>NOTE: Option 2 in the Parent Menu will remove all the saved photos from the internal memory.</p>

CARE & MAINTENANCE

1. Keep the unit clean by wiping it with a slightly damp cloth.
2. Keep the unit out of direct sunlight and away from any direct heat sources.
3. Remove the batteries if the unit will not be in use for an extended period of time.
4. Do not drop the unit on hard surfaces and do not expose the unit to moisture or water.
5. If the unit is not working properly, install a brand new set of batteries.

CONSUMER SERVICES

Creating and developing **LeapFrog®** products is accompanied by a responsibility that we at **LeapFrog®** take very seriously. We make every effort to ensure the accuracy of the information, which forms the value of our products. However, errors sometimes can occur. It is important for you to know that we stand behind our products and encourage you to call our Consumer Services Department with any problems and/or suggestions that you might have. A service representative will be happy to help you.

UK Customers:

Phone: 01702 200244 (from UK) or +44 1702 200244 (outside UK)

Website: www.leapfrog.co.uk/support

Australian Customers:

Phone: 1800 862 155

Website: support.leapfrog.com.au

NZ Customers:

Phone: 0800 400 785

Website: support.leapfrog.com.au

PRODUCT WARRANTY/ CONSUMER GUARANTEES

UK Customers:

Read our complete warranty policy online at leapfrog.com/warranty.

Australian Customers:

VTECH ELECTRONICS (AUSTRALIA) PTY LIMITED -
CONSUMER GUARANTEES

Under the Australian Consumer Law, a number of consumer guarantees apply to goods and services supplied by VTech Electronics (Australia) Pty Limited. Please refer to leapfrog.com/en-au/legal/warranty for further information.



***Visit our website for more
information about our products,
downloads, resources and more.***

leapfrog.com