



Touch & Learn Dinosaur Book™

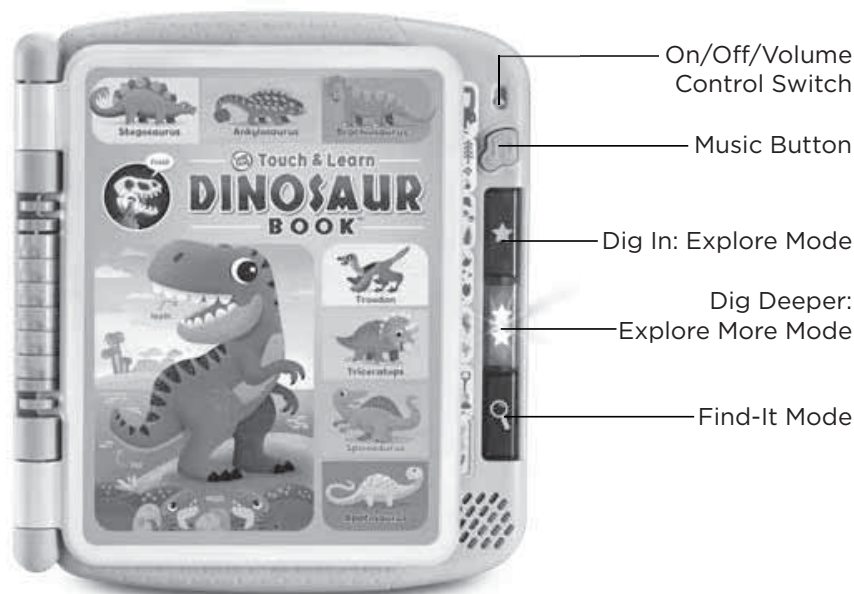


Instruction Manual

This manual contains important information. Please save it for future reference.

INTRODUCTION

Thank you for purchasing the **Touch & Learn Dinosaur Book™**. Each page answers big questions that young children might have about dinosaurs and other prehistoric creatures. Touch to explore facts about dinosaurs in two learning modes, learn how to pronounce dinosaur names, and play the Find-It game.



INCLUDED IN THE PACKAGE

- **Touch & Learn Dinosaur Book™**
- Quick Start Guide

WARNING:

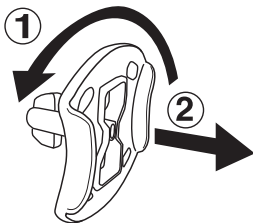
All packing materials such as tape, plastic sheets, packaging locks, removable tags, cable ties, cords and packaging screws are not part of this toy and should be discarded for your child's safety.

NOTE:

Please save this Instruction Manual as it contains important information.

Unlock the Packaging Locks

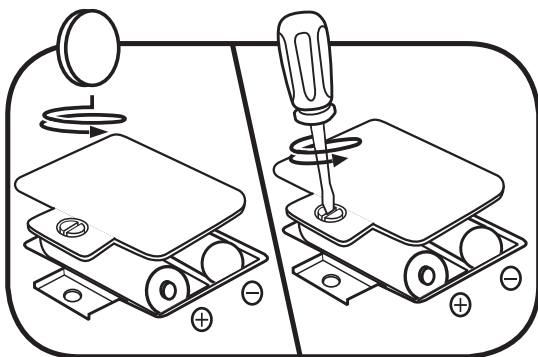
- ① Rotate the packaging locks 90 degrees anticlockwise.
- ② Pull out the packaging locks and discard.



GETTING STARTED

BATTERY REMOVAL AND INSTALLATION

1. Make sure the unit is turned OFF.
2. Locate the battery cover on the back of the unit. Use a screwdriver to loosen the screw and then open the battery cover.
3. If used batteries are present, remove these batteries from the unit by pulling up on one end of each battery.
4. Install 2 new AA (AM-3/LR06) batteries following the diagram inside the battery box. (For best performance, alkaline batteries or fully charged Ni-MH rechargeable batteries are recommended.)
5. Replace the battery cover and tighten the screw to secure.



WARNING:

Adult assembly required for battery installation.
Keep batteries out of reach of children.

IMPORTANT: BATTERY INFORMATION

- Insert batteries with the correct polarity (+ and -).
- Do not mix old and new batteries.
- Do not mix alkaline, standard (carbon-zinc) or rechargeable batteries.
- Only batteries of the same or equivalent type as recommended are to be used.
- Do not short-circuit the supply terminals.
- Remove batteries during long periods of non-use.
- Remove exhausted batteries from the toy.
- Dispose of batteries safely. Do not dispose of batteries in fire.

RECHARGEABLE BATTERIES:

- Remove rechargeable batteries (if removable) from toy before charging.
- Rechargeable batteries are only to be charged under adult supervision.
- Do not charge non-rechargeable batteries.

Disposal of batteries and product



The crossed-out wheeled bin symbols on products and batteries, or on their respective packaging, indicates they must not be disposed of in domestic waste as they contain substances that can be damaging to the environment and human health.

The chemical symbols Hg, Cd or Pb, where marked, indicate that the battery contains more than the specified value of mercury (Hg), cadmium (Cd) or lead (Pb) set out in the Batteries and Accumulators Regulation.



The solid bar indicates that the product was placed on the market after 13th August, 2005.

Please dispose of your product and batteries responsibly.

In the UK, give this toy a second life by disposing of it at a small electricals collection point* so all of its materials can be recycled.

Learn more at:

www.leapfrog.co.uk/recycle

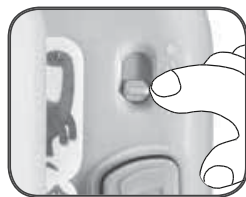
www.leapfrog.com.au/recycle

* Visit www.recyclenow.com to see a list of collection points near you.

PRODUCT FEATURES

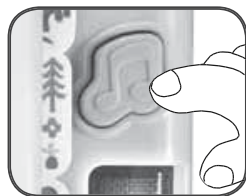
1. On/Off/Volume Control Switch

To turn the unit ON, slide the **On/Off/Volume Control Switch** to the **Low)))** or **High)))** position. To turn the unit OFF, slide the **On/Off/Volume Control Switch** to the **Off ●** position.



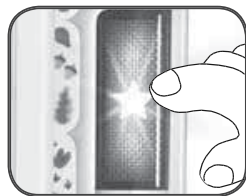
2. Music Button

Press the **Music Button** to hear one of three songs about dinosaurs. There is a unique song on each spread.



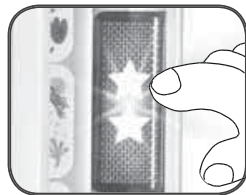
3. Dig In: Explore Mode

Press the button with one star to explore **Dig In Mode**. Hear facts about dinosaurs, how to pronounce their names, and fun sound effects.



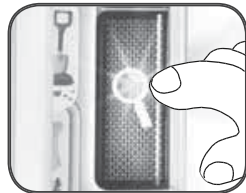
4. Dig Deeper: Explore More Mode

Press the button with two stars to explore **Dig Deeper Mode**. Learn more advanced facts about dinosaurs, other prehistoric animals, and the world around them.



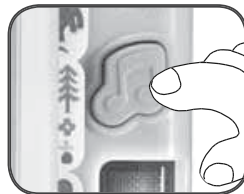
5. Find-It Mode

Press **Find-It Mode** to test your knowledge of what you have learnt.



6. Automatic Shut-Off

To preserve battery life, the **Touch & Learn Dinosaur Book™** will automatically shut off after approximately 45 seconds without input. The unit can be turned on again by turning the page or switching the mode.



SONG LYRICS

1. Roaring Like a Dinosaur Song

Roaring like a dinosaur,

Roar! Roar!

Roaring like a dinosaur,

Roar! Roar!

Roar on dino!

Dino-roar!

2. Dinosaur Names Song

Ankylosaurus, Brachiosaurus, Triceratops and Tyrannosaurus, Velociraptor, Stegosaurus, and Diplodocus all lived before us!

3. Questions Song

Come on and let's explore!

So many dinosaurs!

(endings based on page)

What is a dinosaur?

When did dinosaurs live?

What did dinosaurs eat?

How big were dinosaurs?

What was it like when dinosaurs lived?

What do fossils teach us about dinosaurs?

What happened to dinosaurs?

CARE & MAINTENANCE

1. Keep the unit clean by wiping it with a slightly damp cloth.
2. Keep the unit out of direct sunlight and away from any direct heat sources.
3. Remove the batteries if the unit will not be in use for an extended period of time.
4. Do not drop the unit on hard surfaces and do not expose the unit to moisture or water.
5. Try to change the batteries for new ones if the toy is not working properly.

TROUBLESHOOTING

If for some reason the unit stops working or malfunctions, please follow these steps:

1. Turn the unit **Off**.
2. Interrupt the power supply by removing the batteries.
3. Let the unit stand for a few minutes, then replace the batteries.
4. Turn the unit back **On**. The unit should now be ready to play with again.
5. If the unit still does not work, install a brand new set of batteries.

Environmental phenomena

The unit may malfunction if subjected to radio-frequency interference. It should revert to normal operation when the interference stops. If not, it may become necessary to turn the power **OFF** and back **ON**, or remove and reinstall the batteries. In the unlikely event of an electrostatic discharge, the unit may malfunction and lose memory, requiring the user to reset the device by removing and reinstalling the batteries.

CONSUMER SERVICES

Creating and developing **LeapFrog®** products is accompanied by a responsibility that we at **LeapFrog®** take very seriously. We make every effort to ensure the accuracy of the information, which forms the value of our products. However, errors sometimes can occur. It is important for you to know that we stand behind our products and encourage you to call our Consumer Services Department with any problems and/or suggestions that you might have. A service representative will be happy to help you.

UK Customers:

Phone: 01702 200244 (from UK) or +44 1702 200244 (outside UK)

Website: www.leapfrog.co.uk/support

Australian Customers:

Phone: 1800 862 155

Website: support.leapfrog.com.au

NZ Customers:

Phone: 0800 400 785

Website: support.leapfrog.com.au

PRODUCT WARRANTY/ CONSUMER GUARANTEES

UK Customers:

Read our complete warranty policy online at leapfrog.com/warranty.

Australian Customers:

VTECH ELECTRONICS (AUSTRALIA) PTY LIMITED -
CONSUMER GUARANTEES

Under the Australian Consumer Law, a number of consumer guarantees apply to goods and services supplied by VTech Electronics (Australia) Pty Limited. Please refer to leapfrog.com/en-au/legal/warranty for further information.



***Visit our website for more
information about our products,
downloads, resources and more.***

***leapfrog.co.uk
leapfrog.com.au***

LeapFrog Enterprises, Inc.
A subsidiary of VTech Holdings Limited.
TM & © 2024 LeapFrog Enterprises, Inc.
All rights reserved.
IM-619200-001
Version:0