




Popping Colour Mixer Truck



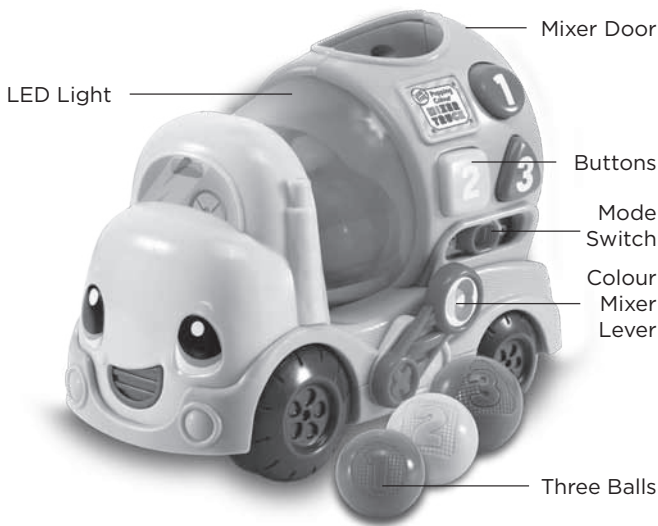
Parent's Guide

This guide contains important information. Please keep it for future reference.

91-003435-009 

INTRODUCTION

Thank you for purchasing the **Popping Colour Mixer Truck**. Watch the cute truck light up and come to life by dropping balls into the mixer and pushing its colourful shape buttons. Push down on the mixer lever to tumble the balls inside and open the door to dump the balls out. Kids will have a blast while building their knowledge of numbers, shapes and colours.



INCLUDED IN THIS PACKAGE

- One **Popping Colour Mixer Truck**
- Three balls
- One parent's guide

WARNING:

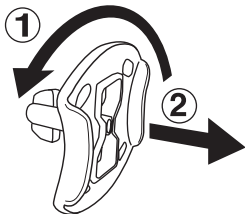
All packing materials such as tape, plastic sheets, packaging locks, removable tags, cable ties and packaging screws are not part of this toy, and should be discarded for your child's safety.

NOTE:

Please keep this parent's guide as it contains important information.

Unlock the packaging locks:

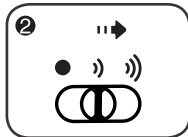
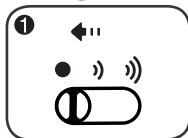
- ① Rotate the packaging locks 90 degrees counterclockwise.
- ② Pull out the packaging locks and discard.



ACTIVATE NORMAL PLAY MODE

This product is in a try-me mode in the packaging. To activate normal play mode, please complete the following steps:

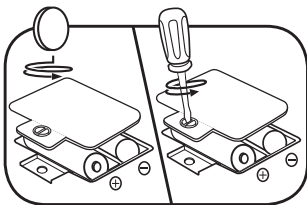
1. Slide the **ON/OFF/VOLUME CONTROL SWITCH** to the **OFF (●)** position.
2. Slide the **ON/OFF/VOLUME CONTROL SWITCH** to the **VOLUME CONTROL (»/»)** position to activate normal play mode.



GETTING STARTED

BATTERY INSTALLATION

1. Make sure the unit is turned **OFF**.
2. Locate the battery cover on the bottom of the unit.
3. Use a screwdriver to loosen the screw and open the battery cover.
4. Install 2 new AA (AM-3/LR6) batteries into the battery box as illustrated. (The use of new alkaline batteries is recommended for maximum performance.)
5. Replace the battery cover and tighten the screw to secure.



BATTERY NOTICE

- Use new alkaline batteries or fully charged NI-MH (Nickel Metal-hydride) rechargeable batteries for best performance.
- Use only batteries of the same or equivalent type as recommended.
- Do not mix different types of batteries: alkaline, standard (carbon-zinc) or rechargeable, or new and used batteries.
- Do not use damaged batteries.
- Insert batteries with the correct polarity.
- Do not short-circuit the battery terminals.
- Remove exhausted batteries from the toy.
- Remove batteries during long periods of non-use.
- Do not dispose of batteries in fire.
- Do not charge non-rechargeable batteries.
- Remove rechargeable batteries from the toy before charging (if removable).
- Rechargeable batteries are only to be charged under adult supervision.

Disposal of batteries and product



The crossed-out wheeled bin symbols on products and batteries, or on their respective packaging, indicates they must not be disposed of in domestic waste as they contain substances that can be damaging to the environment and human health.



The chemical symbols Hg, Cd or Pb, where marked, indicate that the battery contains more than the specified value of mercury (Hg), cadmium (Cd) or lead (Pb) set out in Battery Directive (2006/66/EC).

The solid bar indicates that the product was placed on the market after 13th August, 2005.

Help protect the environment by disposing of your product or batteries responsibly.

For more information, please visit:

www.recycle-more.co.uk

www.recyclenow.com

PRODUCT FEATURES

1. On/Off/Volume Control Switch

Slide the **On/Off/Volume Control Switch** to turn the toy on and select the volume.



2. Buttons

Press to hear cool truck sounds and fun phrases that introduce numbers, shapes and colours.



3. Mode Switch

Slide the **Mode Switch** to choose Music Mixer, Training Time or Let's Get to Work mode.



4. Colour Mixer Lever

Push down to activate the mixer.



5. Colour Mixing Balls

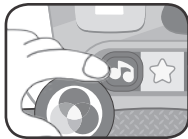
Drop the balls into the mixer to hear fun phrases and sound effects. Drop two balls in and press the **Colour Mixer Lever** to "mix" the colours together.



ACTIVITIES

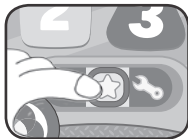
1. Music Mixer

Drop balls into the mixer to play music. Layer construction sounds over the music by pressing the **Buttons**. Press the **Colour Mixer Lever** to tumble balls, create new colours and make cool beats! Open the **Mixer Door** to stop the music and sound effects.



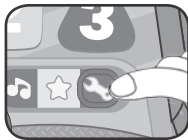
2. Training Time

Drop balls into the mixer to hear their colours or numbers announced. The mixer will light up with a matching colour. Press the **Colour Mixer Lever** to tumble the balls and mix the colours. Open the **Mixer Door** to retrieve the balls. Press the **Buttons** to hear number, shape and colour phrases.



3. Let's Get to Work

Answer questions by pressing the **Buttons** or by dropping balls into the mixer.



CARE & MAINTENANCE

1. Keep the unit clean by wiping it with a slightly damp cloth.
2. Keep the unit out of direct sunlight and away from any direct heat sources.
3. Remove the batteries when the unit is not in use for an extended period of time.
4. Do not drop the unit on a hard surface and do not expose the unit to excess moisture.

TROUBLESHOOTING

If for some reason the program/activity stops working, please follow these steps:

1. Turn the unit **OFF**.
2. Interrupt the power supply by removing the batteries.
3. Let the unit stand for a few minutes, then replace the batteries.
4. Turn the unit back **ON**. The unit will now be ready to play again.
5. If the unit still does not work, replace with an entire set of new batteries.

Environmental phenomena.

The unit may malfunction if subjected to radio-frequency interference. It should revert to normal operation when the interference stops. If not, it may become necessary to turn the power **OFF** and back **ON**, or remove and reinstall the batteries. In the unlikely event of an electrostatic discharge, the unit may malfunction and lose memory, requiring the user to reset the device by removing and reinstalling the batteries.

IMPORTANT NOTE:

If the problem persists, please call our Consumer Services Department at **01702 200244** in the U.K. or email support@leapfrog.co.uk. Creating and developing LeapFrog® products is accompanied by a responsibility that we take very seriously. We make every effort to ensure the accuracy of the information, which forms the value of our products. However, errors sometimes can occur. It is important for you to know that we stand behind our products and encourage you to contact us with any problems and/or suggestions you might have. A service representative will be happy to help you.



CLASS 1
LED PRODUCT



***Visit our website for more
information about our products,
downloads, resources and more.***

leapfrog.co.uk

***For warranty information, please visit
leapfrog.com/warranty.***

LeapFrog Enterprises, Inc.,
a subsidiary of VTech Holdings Limited.
TM & © 2017 LeapFrog Enterprises, Inc.

All rights reserved.
91-003435-009 