



# Purrfect Counting Purse™



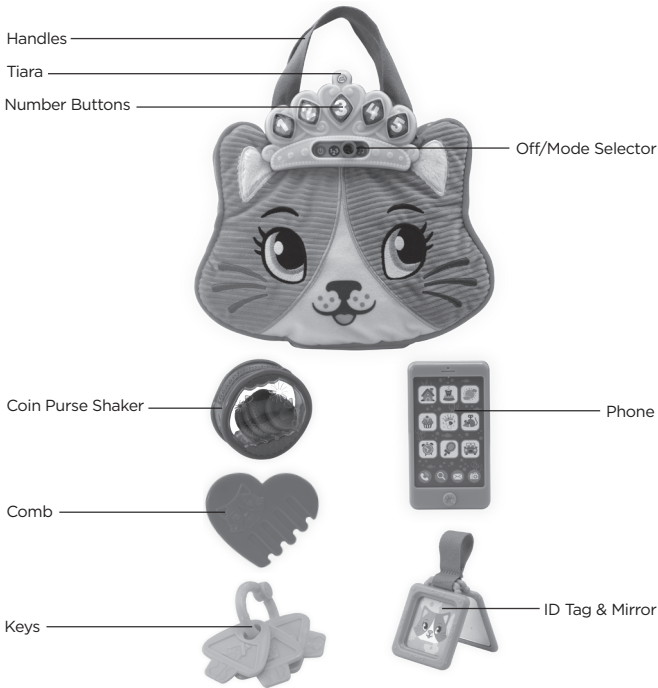
## Parent's Guide

This guide contains important information. Please keep it for future reference.

# INTRODUCTION

Thank you for purchasing the **Purrfect Counting Purse™**.

This clever kitten purse teaches numbers and counting, shapes and colors while promoting imaginary play with three ways to play. The five play accessories match the light-up buttons on the interactive tiara so children can pack up the purse for on-the-go fun while improving their fine and gross motor skills.



# INCLUDED IN THIS PACKAGE

- **Purrfect Counting Purse™**
- 5 play accessories
  - Phone
  - ID tag & mirror
  - Keys
  - Comb
  - Coin purse shaker
- Parent's guide

## WARNING

All packing materials, such as tape, plastic sheets, packaging locks, removable tags, cable ties and packaging screws are not part of this toy, and should be discarded for your child's safety.

## NOTE

Please keep this parent's guide as it contains important information.

## ATTENTION

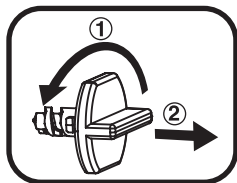
Pour la sécurité de votre enfant, débarrassez-vous de tous les produits d'emballage tels que rubans adhésifs, feuilles de plastique, attaches, étiquettes et vis d'emballage. Ils ne font pas partie du jouet.

## NOTE

Il est conseillé de conserver ce guide des parents car il comporte des informations importantes.

## Unlock the packaging locks:

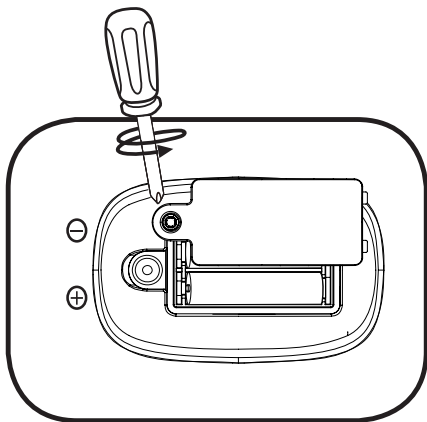
- ① Turn the packaging lock counter-clockwise several times.
- ② Pull out and discard the packaging lock.



# GETTING STARTED

## BATTERY REMOVAL AND INSTALLATION

1. Make sure the unit is turned **Off**.
2. Find the battery cover located on the back of the unit and use a screwdriver to loosen the screw and open the battery cover.
3. Remove old batteries by pulling up on one end of each battery.
4. Install 2 new AAA (AM-4/LR03) batteries into the battery compartment as illustrated.
5. Replace the battery cover and tighten the screw to secure.



## BATTERY NOTICE





- Use new alkaline batteries for maximum performance.
- Use only batteries of the same or equivalent type as recommended.
- Do not mix different types of batteries: alkaline, standard (carbon-zinc) or rechargeable, or new and used batteries.
- Do not use damaged batteries.
- Insert batteries with the correct polarity ( + and - ).
- Do not short-circuit the battery terminals.
- Remove exhausted batteries from the toy.
- Remove batteries during long periods of non-use.
- Do not dispose of batteries in fire.
- Do not charge non-rechargeable batteries.
- Remove rechargeable batteries from the toy before charging (if removable).
- Rechargeable batteries are only to be charged under adult supervision.

## MISE EN GARDE

- Utiliser des piles alcalines neuves pour des performances maximales.
- Seules des piles du type recommandé doivent être utilisées.
- Ne pas mélanger différents types de piles ou d'accumulateurs, ne pas mélanger des piles ou des accumulateurs neufs avec des usagés.
- Ne pas utiliser des piles ou des accumulateurs endommagés.
- Mettre en place les piles ou les accumulateurs en respectant les polarités + et -.
- Ne pas mettre les bornes d'une pile ou d'un accumulateur en court-circuit (en reliant directement le + et le -).
- Enlever les piles ou les accumulateurs usagés du jouet.
- Retirer les piles ou les accumulateurs en cas de non-utilisation prolongée.
- Ne les jeter ni au feu ni dans la nature.
- Ne pas tenter de recharger des piles non rechargeables.
- Enlever les accumulateurs du jouet pour les recharger.
- Les accumulateurs ne doivent être chargés que sous la surveillance d'un adulte.

# PRODUCT FEATURES

## 1. Off/Mode Selector

To turn the unit **On**, slide the **Off/Mode Selector** from the **Off** position to Learn mode  , Pretend mode  or Music mode  . To turn the unit **Off**, slide the **Off/Mode Selector** to the **Off**  position.



### Learn Mode

Press the light-up number buttons to learn about numbers, counting, shapes and colors.

### Pretend Mode

Press the light-up number buttons to hear fun cat phrases and sounds which spark your child's imagination for pretend play.

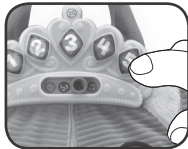
### Music Mode

Press the light-up number buttons for 3 unique musical activities.

## 2. Five Light-Up Number Buttons

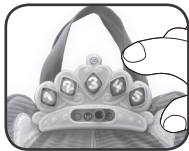
In Learn and Pretend modes, press the **Number** buttons to hear phrases and sounds related to the matching colored play accessory. In Music mode, press the light-up **Number** buttons for three musical activities:

- The number 1 button plays three songs to dance and sing along to.
- The number 2, 3 and 4 buttons offer a Jam Along activity. Press the **Number** buttons to add fun sounds to the three different tunes.
- The number 5 button plays a cat piano to create your own music.



### 3. Two Handles

With the two handles and sturdy construction, the purse is easy to pack up with the play accessories. Its stand-open construction makes it easy to fill, empty, and fill again while reinforcing fine-motor skills. Carry the purse around to work gross-motor skills.



### 4. Textured Fabrics

The friendly cat face offers tactile learning with different fabric textures and printed designs.



### 5. Automatic Shut-Off

To preserve battery life, the **Purrfect Counting Purse™** will automatically shut off after approximately 60 seconds without input. The unit can be turned on again by pressing any light-up **Number** button or moving the **Off/Mode Selector** to Learn mode, Pretend mode or Music mode.

#### NOTE

If the unit powers down or if the lights fade out during play, please install a new set of batteries.

## ACTIVITIES

#### 1. Put-and-Take Play

Fill the stand-open purse with the five accessories. Empty it and fill it again to refine fine-motor skills. Carrying the purse around helps develop gross-motor skills.

#### 2. Pretend Play

Pretend to have a busy day out and about with the purse and five play accessories. Each one has molded numbers

and vibrant details to reinforce counting and color identification in everyday activities.

### **3. Musical Play**

Switch to Music mode to enjoy three musical activities: listening to songs, jamming along to tunes by pressing the number buttons to add fun sounds, and playing a cat piano using the musical scale.

### **4. Sensory Play**

The various fabric textures and details on the purse provide additional tactile discovery through sensory play.

## **SONG LYRICS**

### **Pack Up Your Purse Song**

Let's get ready to go.

Grab everything that you need.

Pack up your purse.

Meow!

### **Colorful Things Song**

Bring all our things for a colorful day.

See shapes and colors wherever we play.

Each thing is a color of the rainbow.

Let's play and sing with these colorful things!

### **Counting Song**

1, 2, 3, 4, 5

Do you have everything?

## **CARE & MAINTENANCE**

1. Keep the unit clean by wiping it with a slightly damp cloth.
2. Keep the unit out of direct sunlight and away from direct heat sources.



3. Remove the batteries if the unit will not be in use for an extended period of time.
4. Do not drop the unit on a hard surface and do not expose the unit to moisture or water.

## TROUBLESHOOTING

If for some reason the unit stops working or malfunctions, please follow these steps:

1. Turn the unit **Off**.
2. Interrupt the power supply by removing the batteries.
3. Let the unit stand for a few minutes, then replace the batteries.
4. Turn the unit **On**. The unit should now be ready to use again.
5. If the unit still does not work, install a new set of batteries.

## Environmental Phenomena

The unit may malfunction if subjected to radio-frequency interference. It should revert to normal operation when the interference stops. If not, it may become necessary to turn the power **Off** and back **On**, or remove and reinstall the batteries. In the unlikely event of an electrostatic discharge, the unit may malfunction and lose memory, requiring the user to reset the device by removing and reinstalling the batteries.

## Impact de l'environnement

Une défaillance de fonctionnement de l'appareil peut survenir s'il est sujet à des interférences avec les fréquences radioélectriques. Le fonctionnement normal de l'appareil devrait reprendre avec l'arrêt des interférences. Si ce n'est pas le cas, il peut s'avérer nécessaire d'éteindre et rallumer l'appareil ou de retirer et réinstaller les piles. Dans l'éventualité peu probable d'une décharge électrostatique, un mauvais fonctionnement et une perte de mémoire de l'appareil peuvent se produire. L'utilisateur doit alors retirer et réinstaller les piles pour réinitialiser l'appareil.

### IMPORTANT NOTE

If the problem persists, please call our **Consumer Services Department** at **1-800-701-5327** in the U.S. or email **support@leapfrog.com**. Creating and developing LeapFrog products is accompanied by a responsibility that we take very seriously. We make every effort to ensure the accuracy of the information, which forms the value of our products. However, errors sometimes can occur. It is important for you to know that we stand behind our products and encourage you to contact us with any problems and/or suggestions you might have. A service representative will be happy to help you.

### CAUTION

Changes or modifications not expressly approved by the party responsible for compliance could void the user's authority to operate the equipment.

### NOTE

This equipment has been tested and found to comply with the limits for a Class B digital device, pursuant to Part 15 of the FCC Rules. These limits are designed to provide reasonable protection against harmful interference in a residential installation. This equipment generates, uses and can radiate radio frequency energy and, if not installed and used in accordance with the instructions, may cause harmful interference to radio communications. However, there is no guarantee that interference will not occur in a particular installation. If this equipment does cause harmful interference to radio or television reception, which can be determined by turning the equipment off and on, the user is encouraged to try to correct the interference by one or more of the following measures:

- Reorient or relocate the receiving antenna.
- Increase the separation between the equipment and receiver.
- Connect the equipment into an outlet on a circuit different from that to which the receiver is connected.
- Consult the dealer or an experienced radio/TV technician for help.

### Supplier's Declaration of Conformity

Trade Name: LeapFrog®  
Model: 6100  
Product name: **Purrfect Counting Purse™**  
Responsible Party: LeapFrog Enterprises, Inc.  
Address: 6401 Hollis Street, Suite 100,  
Emeryville, CA 94608  
Website: leapfrog.com

THIS DEVICE COMPLIES WITH PART 15 OF THE FCC RULES. OPERATION IS SUBJECT TO THE FOLLOWING TWO CONDITIONS: (1) THIS DEVICE MAY NOT CAUSE HARMFUL INTERFERENCE, AND (2) THIS DEVICE MUST ACCEPT ANY INTERFERENCE RECEIVED, INCLUDING INTERFERENCE THAT MAY CAUSE UNDESIRE OPERATION.

*CAN ICES-3 (B)/NMB-3(B)*

CLASS 1  
LED PRODUCT



***Visit our website for more  
information about our products,  
downloads, resources and more.***

***leapfrog.com***

***Read our complete warranty policy online at  
leapfrog.com/warranty.***

LeapFrog Enterprises, Inc.  
A subsidiary of VTech Holdings Limited.  
TM & © 2020 LeapFrog Enterprises, Inc.  
All rights reserved.  
91-003830-000 