



Learn & Groove[®]
Caterpillar Drums[™]



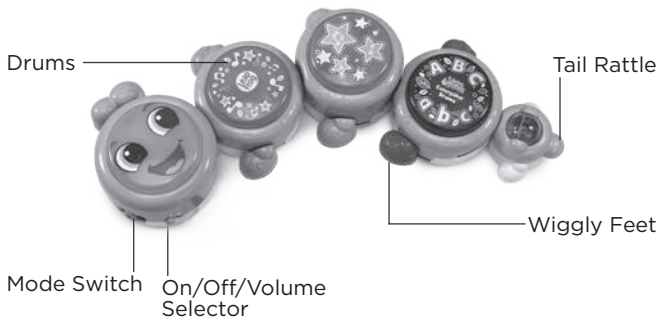
Parent's Guide

This guide contains important information. Please keep it for future reference.

91-003726-007 US/CA

INTRODUCTION

Thank you for purchasing the **Learn & Groove® Caterpillar Drums™!** Explore three play modes, six musical activities and 28 drum sounds in this interactive drum toy that teaches music, ABCs and counting. The caterpillar character makes learning fun with a movable body and wiggly feet. Kids can play along to classical music and 14 children's melodies or create new beats. Get in the learning groove!



INCLUDED IN THIS PACKAGE

- Learn & Groove® Caterpillar Drums™
- Parent's guide

WARNING

All packing materials such as tape, plastic sheets, packaging locks, removable tags, cable ties and packaging screws are not part of this toy, and should be discarded for your child's safety.

NOTE

Please keep this parent's guide as it contains important information.

ATTENTION

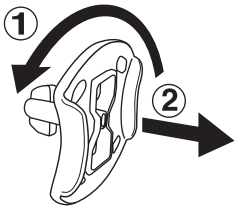
Pour la sécurité de votre enfant, débarrassez-vous de tous les produits d'emballage tels que rubans adhésifs, feuilles de plastique, attaches, étiquettes et vis d'emballage. Ils ne font pas partie du jouet.

NOTE

Il est conseillé de conserver ce guide des parents car il comporte des informations importantes.

Unlock the Packaging Locks

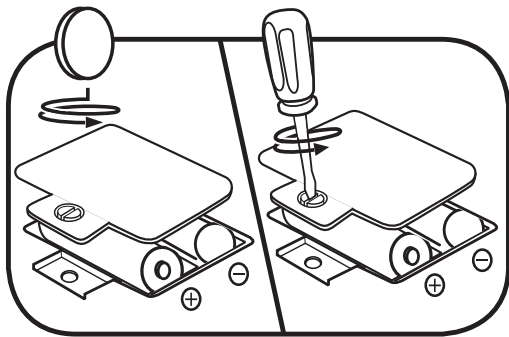
- ① Rotate the packaging locks 90 degrees counterclockwise.
- ② Pull out the packaging locks and discard.



GETTING STARTED

BATTERY REMOVAL AND INSTALLATION

1. Make sure the unit is turned **Off**.
2. Locate the battery cover on the bottom of the unit and use a screwdriver to loosen the screw and open the battery cover.
3. Remove old batteries by pulling up on one end of each battery.
4. Install 2 new AA (AM-3/LR6) batteries following the diagram inside the battery box.
5. Replace the battery cover and tighten the screw to secure.



BATTERY NOTICE

- Use new alkaline batteries for maximum performance.
- Use only batteries of the same or equivalent type as recommended.
- Do not mix different types of batteries: alkaline, standard (carbon-zinc) or rechargeable, or new and used batteries.
- Do not use damaged batteries.
- Insert batteries with the correct polarity (+ and -).
- Do not short-circuit the battery terminals.
- Remove exhausted batteries from the toy.
- Remove batteries during long periods of non-use.
- Do not dispose of batteries in fire.
- Do not charge non-rechargeable batteries.
- Remove rechargeable batteries from the toy before charging (if removable).
- Rechargeable batteries are only to be charged under adult supervision.

MISE EN GARDE

- Utiliser des piles alcalines neuves pour des performances maximales.
- Seules des piles du type recommandé doivent être utilisées.
- Ne pas mélanger différents types de piles ou d'accumulateurs, ne pas mélanger des piles ou des accumulateurs neufs avec des usagés.
- Ne pas utiliser des piles ou des accumulateurs endommagés.
- Mettre en place les piles ou les accumulateurs en respectant les polarités + et -.
- Ne pas mettre les bornes d'une pile ou d'un accumulateur en court-circuit (en reliant directement le + et le -).
- Enlever les piles ou les accumulateurs usagés du jouet.
- Retirer les piles ou les accumulateurs en cas de non-utilisation prolongée.
- Ne les jeter ni au feu ni dans la nature.
- Ne pas tenter de recharger des piles non rechargeables.
- Enlever les accumulateurs du jouet pour les recharger.
- Les accumulateurs ne doivent être chargés que sous la surveillance d'un adulte.

PRODUCT FEATURES

1. On/Off/Volume Selector

Locate the **On/Off/Volume Selector** under the caterpillar's chin. Slide it to turn the toy on and select the sound level.



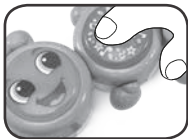
2. Mode Switch

Locate the **Mode Switch** near the **On/Off/Volume Selector**. Slide it to activate Jam Session, Songs or Learn mode.



3. Drums

Press any of the **Drums** to hear fun sounds, music and singing.



4. Tail Rattle

Spin the **Tail Rattle** for non-electronic percussion sounds.



5. Wiggly Feet

Press any of the drums to make the caterpillar wiggle its feet.



6. Automatic Shut off

To preserve battery life, the **Learn & Groove® Caterpillar Drums™** will automatically shut off after approximately 35 seconds without input. The unit can be turned on again by pressing any drum.

NOTE

If the unit powers down or if the light fades out during play, please install a new set of batteries.

ACTIVITIES

1. Jam Session Mode

First, select your drum sound: drums with music, silly sounds, animal sounds or drum solo. Then press the drums to explore the music and create your own beats!



2. Songs Mode

Press any drum to play a favorite children's song or a classical music piece. Some songs are played note by note, and others phrase by phrase.

After the first song, you have the option to play the Challenge mode. Select to play, then follow along and press the flashing lights to play the songs.



3. Learn Mode

Enjoy four activities in Learn mode:

1. Count-a-pillar:

Press the drums as they light up. Try to get to 20 before the music stops!



2. Tempo:

Press the drums to speed up or slow down the melody of “Head, Shoulders, Knees and Toes”! The drum on the far left plays at the slowest tempo. The music speeds up as you press the drums moving to the right.

3. Musical Scale:

Press any drum to play the musical scale. After the first song is finished, you have the option to play the Challenge mode. Select to play, then follow along and press the flashing lights to play the song.

4. ABC Song:

Press any drum to play the ABC song. After the first song, you have the option to play the Challenge mode. Select to play, then follow along and press the flashing lights to play the song.

MELODIES AND SONGS

1. Old MacDonald Had a Farm
2. Twinkle, Twinkle, Little Star
3. The Itsy Bitsy Spider
4. If You're Happy and You Know It
5. Frère Jacques
6. Beethoven's "Ode to Joy"
7. Vivaldi's "Spring"
8. Rossini's "William Tell Overture"
9. Bingo
10. Mary Had a Little Lamb
11. The Muffin Man
12. The Wheels on the Bus
13. Counting to 10
14. Five Little Monkeys Jumping on the Bed
15. Head, Shoulders, Knees and Toes
16. Musical Scale
17. ABC Song

CARE & MAINTENANCE

1. Keep the unit clean by wiping it with a slightly damp cloth.
2. Keep it out of direct sunlight and away from direct heat sources.
3. Remove the batteries if the unit will not be in use for an extended period of time.
4. Do not drop the unit on a hard surface and do not expose the unit to moisture or water.

TROUBLESHOOTING

If for some reason the unit stops working or malfunctions, please follow these steps:

1. Turn the unit **Off**.
2. Interrupt the power supply by removing the batteries.
3. Let the unit stand for a few minutes, then replace the batteries.
4. Turn the unit back **On**. The unit will now be ready to use again.
5. If the unit still does not work, install a new set of batteries.

Environmental Phenomena

The unit may malfunction if subjected to radio-frequency interference. It should revert to normal operation when the interference stops. If not, it may become necessary to turn the power **off** and back **on**, or remove and reinstall the batteries. In the unlikely event of an electrostatic discharge, the unit may malfunction and lose memory, requiring the user to reset the device by removing and reinstalling the batteries.

Impact de l'environnement

Une défaillance de fonctionnement de l'appareil peut survenir s'il est sujet à des interférences avec les fréquences radioélectriques. Le fonctionnement normal de l'appareil devrait reprendre avec l'arrêt des interférences. Si ce n'est pas le cas, il peut s'avérer nécessaire d'éteindre et rallumer l'appareil ou de retirer et réinstaller les piles. Dans l'éventualité peu probable d'une décharge électrostatique, un mauvais fonctionnement et une perte de mémoire de l'appareil peuvent se produire. L'utilisateur doit alors retirer et réinstaller les piles pour réinitialiser l'appareil.

NOTE

This equipment has been tested and found to comply with the limits for a Class B digital device, pursuant to Part 15 of the FCC Rules. These limits are designed to provide reasonable protection against harmful interference in a residential installation. This equipment generates, uses and can radiate radio frequency energy and, if not installed and used in accordance with the instructions, may cause harmful interference to radio communications. However, there is no guarantee that interference will not occur in a particular installation. If this equipment does cause harmful interference to radio or television reception, which can be determined by turning the equipment off and on, the user is encouraged to try to correct the interference by one or more of the following measures:

- Reorient or relocate the receiving antenna.
- Increase the separation between the equipment and receiver.
- Connect the equipment into an outlet on a circuit different from that to which the receiver is connected.
- Consult the dealer or an experienced radio/TV technician for help.

CAUTION

Changes or modifications not expressly approved by the party responsible for compliance could void the user's authority to operate the equipment.

IMPORTANT NOTE:

If the problem persists, please call our Consumer Services Department at **1-800-701-5327** in the U.S. or email support@leapfrog.com. Creating and developing LeapFrog® products is accompanied by a responsibility that we take very seriously. We make every effort to ensure the accuracy of the information, which forms the value of our products. However, errors sometimes can occur. It is important for you to know that we stand behind our products and encourage you to contact us with any problems and/or suggestions you might have. A service representative will be happy to help you.

Supplier's Declaration of Conformity

Trade Name:	LeapFrog®
Model:	6102
Product Name:	Learn & Groove® Caterpillar Drums™
Responsible Party:	LeapFrog Enterprises, Inc.
Address:	6401 Hollis Street, Suite 100, Emeryville, CA 94608
Website:	leapfrog.com

THIS DEVICE COMPLIES WITH PART 15 OF THE FCC RULES. OPERATION IS SUBJECT TO THE FOLLOWING TWO CONDITIONS: (1) THIS DEVICE MAY NOT CAUSE HARMFUL INTERFERENCE, AND (2) THIS DEVICE MUST ACCEPT ANY INTERFERENCE RECEIVED, INCLUDING INTERFERENCE THAT MAY CAUSE UNDESIRE OPERATION.

CAN ICES-3 (B)/NMB-3(B)



**CLASS 1
LED PRODUCT**



*Visit our website for more
information about our products,
downloads, resources and more.*

leapfrog.com

*Read our complete warranty policy online
at leapfrog.com/warranty*

LeapFrog Enterprises, Inc.,
A subsidiary of VTech Holdings Limited.
TM & © 2020 LeapFrog Enterprises, Inc.

All rights reserved.

91-003726-007 (US) (CA)