



# 100 Words About Places I Go™



## Parent's Guide

This guide contains important information. Please keep it for future reference.

91-003937-004 US

# INTRODUCTION

Thank you for purchasing the **100 Words About Places I Go™**. Get ready to explore more than one hundred words in English and Spanish! Learn about words in 12 categories, sing along to learning songs and play fun sound effects while building vocabulary—an important skill linked to future reading success.



# INCLUDED IN THIS PACKAGE

- 100 Words About Places I Go™
- Parent's guide

## WARNING

All packing materials such as tape, plastic sheets, packaging locks, removable tags, cable ties, cords and packaging screws are not part of this toy, and should be discarded for your child's safety.

## NOTE

Please keep this parent's guide as it contains important information.

## ATTENTION

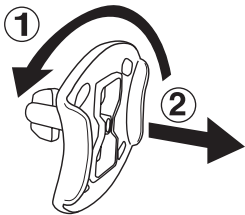
Pour la sécurité de votre enfant, débarrassez-vous de tous les produits d'emballage tels que rubans adhésifs, feuilles de plastique, attaches, étiquettes, cordons et vis d'emballage. Ils ne font pas partie du jouet.

## NOTE

Il est conseillé de conserver ce guide des parents car il comporte des informations importantes.

## Unlock the Packaging Locks

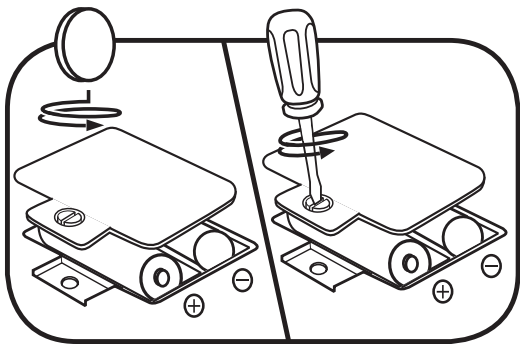
- ① Rotate the packaging lock 90 degrees counterclockwise.
- ② Pull out the packaging lock and discard.



# GETTING STARTED

## BATTERY INSTALLATION

1. Make sure the unit is turned **Off**.
2. Find the battery cover located on the back of the unit, use a screwdriver to loosen the screw and then open the battery cover.
3. Remove old batteries by pulling up on one end of each battery.
4. Install 2 new AA AM-3/LR6 batteries following the diagram inside the battery cover.
5. Replace the battery cover and tighten the screw to secure.



## **BATTERY NOTICE**

- Use new alkaline batteries for maximum performance.
- Use only batteries of the same or equivalent type as recommended.
- Do not mix different types of batteries: alkaline, standard (carbon-zinc) or rechargeable, or new and used batteries.
- Do not use damaged batteries.
- Insert batteries with the correct polarity (+ and -).
- Do not short-circuit the battery terminals.
- Remove exhausted batteries from the toy.
- Remove batteries during long periods of non-use.
- Do not dispose of batteries in fire.
- Do not charge non-rechargeable batteries.
- Remove rechargeable batteries from the toy before charging (if removable).
- Rechargeable batteries are only to be charged under adult supervision.

## **MISE EN GARDE**

- Utiliser des piles alcalines neuves pour des performances maximales.
- Seules des piles du type recommandé doivent être utilisées.
- Ne pas mélanger différents types de piles ou d'accumulateurs, ne pas mélanger des piles ou des accumulateurs neufs avec des usagés.
- Ne pas utiliser des piles ou des accumulateurs endommagés.
- Mettre en place les piles ou les accumulateurs en respectant les polarités + et -.
- Ne pas mettre les bornes d'une pile ou d'un accumulateur en court-circuit (en reliant directement le + et le -).
- Enlever les piles ou les accumulateurs usagés du jouet.
- Retirer les piles ou les accumulateurs en cas de non-utilisation prolongée.
- Ne les jeter ni au feu ni dans la nature.
- Ne pas tenter de recharger des piles non rechargeables.
- Enlever les accumulateurs du jouet pour les recharger.
- Les accumulateurs ne doivent être chargés que sous la surveillance d'un adulte.



## WARNING / ATTENTION :

Adult assembly required for battery installation.

Keep batteries out of reach of children.

Les piles ou accumulateurs doivent être installés par un adulte.

Tenir les piles ou accumulateurs hors de portée des enfants.

## PRODUCT FEATURES

### 1. Off/Low/High Volume Selector

Slide the **Off/Low/High Volume Selector** to turn the unit **On** and select the volume.



### 2. Music Button

Press the **Music Button** anytime to hear two learning songs in English or in Spanish.



### 3. Language Switch

Slide the **Language Switch** to hear the book in English or in Spanish.



### 4. Mode Selector

Slide the **Mode Selector** to choose Word mode, Colors & Counting mode or Fun Sounds mode.



## 5. Automatic Shut-Off

To preserve battery life, the **100 Words About Places I Go™** book will automatically shut off after approximately 30 seconds without input. Open the book or slide the **Mode Selector** to turn the unit on again.

# ACTIVITIES

## 1. Word Mode

Slide the **Mode Selector** to the top for Word mode. Press pictures on the book pages to learn about words and people from 12 neighborhood places.

## 2. Colors & Counting Mode

Slide the **Mode Selector** to the middle position for Colors & Counting mode. Press pictures on the book pages to practice counting and identify the colors of different objects.

## 3. Fun Sounds Mode

Slide the **Mode Selector** to the bottom position for Fun Sounds mode. Press pictures on the book pages to hear music and sound effects.

## 4. Music

Press the light-up **Music Button** to hear two learning songs.

## 5. Language Play

Slide the English/Spanish **Language Switch** to hear the songs, directions and picture words in English or Spanish.

## CARE & MAINTENANCE

1. Keep the unit clean by wiping it with a slightly damp cloth.
2. Keep the unit out of direct sunlight and away from direct heat sources.
3. Remove the batteries if the unit will not be in use for an extended period of time.
4. Avoid dropping the unit and never try to dismantle it.
5. Do not drop the unit on hard surfaces and do not expose the unit to moisture or water.

## TROUBLESHOOTING

If for some reason the unit stops working or malfunctions, please follow these steps:

1. Turn the unit **Off**.
2. Interrupt the power supply by removing the batteries.
3. Let the unit stand for a few minutes, then replace the batteries.
4. Turn the unit back **On**. The unit should now be ready to play again.
5. If the unit still does not work, replace with an entire set of new batteries.



## Environmental phenomena

The unit may malfunction if subjected to radio-frequency interference. It should revert to normal operation when the interference stops. If not, it may become necessary to turn the power **OFF** and back **ON**, or remove and reinstall the batteries. In the unlikely event of an electrostatic discharge, the unit may malfunction and lose memory, requiring the user to reset the device by removing and reinstalling the batteries.

## Impact de l'environnement

Une défaillance de fonctionnement de l'appareil peut survenir s'il est sujet à des interférences avec les fréquences radioélectriques. Le fonctionnement normal de l'appareil devrait reprendre avec l'arrêt des interférences. Si ce n'est pas le cas, il peut s'avérer nécessaire d'éteindre et rallumer l'appareil ou de retirer et réinstaller les piles. Dans l'éventualité peu probable d'une décharge électrostatique, un mauvais fonctionnement et une perte de mémoire de l'appareil peuvent se produire. L'utilisateur doit alors retirer et réinstaller les piles pour réinitialiser l'appareil.

### IMPORTANT NOTE:

If the problem persists, please call our **Consumer Services Department** at **1-800-701-5327** in the U.S. or email **support@leapfrog.com**. Creating and developing LeapFrog products is accompanied by a responsibility that we take very seriously. We make every effort to ensure the accuracy of the information, which forms the value of our products. However, errors sometimes can occur. It is important for you to know that we stand behind our products and encourage you to contact us with any problems and/or suggestions you might have. A service representative will be happy to help you.

## **CAUTION**

Changes or modifications not expressly approved by the party responsible for compliance could void the user's authority to operate the equipment.

## **NOTE**

This equipment has been tested and found to comply with the limits for a Class B digital device, pursuant to Part 15 of the FCC Rules. These limits are designed to provide reasonable protection against harmful interference in a residential installation. This equipment generates, uses and can radiate radio frequency energy and, if not installed and used in accordance with the instructions, may cause harmful interference to radio communications. However, there is no guarantee that interference will not occur in a particular installation. If this equipment does cause harmful interference to radio or television reception, which can be determined by turning the equipment off and on, the user is encouraged to try to correct the interference by one or more of the following measures:

- Reorient or relocate the receiving antenna.
- Increase the separation between the equipment and receiver.
- Connect the equipment into an outlet on a circuit different from that to which the receiver is connected.
- Consult the dealer or an experienced radio/TV technician for help.

## **Supplier's Declaration of Conformity**

47 CFR § 2.1077 Compliance Information

Trade Name: LeapFrog®  
Model: 6130  
Product Name: 100 Words About Place I Go™  
Responsible Party: LeapFrog Enterprises, Inc.  
Address: 6401 Hollis Street, Suite 100,  
Emeryville, CA 94608  
Website: leapfrog.com

THIS DEVICE COMPLIES WITH PART 15 OF THE FCC RULES. OPERATION IS SUBJECT TO THE FOLLOWING TWO CONDITIONS: (1) THIS DEVICE MAY NOT CAUSE HARMFUL INTERFERENCE, AND (2) THIS DEVICE MUST ACCEPT ANY INTERFERENCE RECEIVED, INCLUDING INTERFERENCE THAT MAY CAUSE UNDESIRE OPERATION.

*CAN ICES-3 (B)/NMB-3(B)*



***Visit our website for more  
information about our products,  
downloads, resources and more.***

***leapfrog.com  
leapfrog.ca***

**Read our complete warranty policy online at  
*leapfrog.com/warranty  
leapfrog.ca/warranty***

LeapFrog Enterprises, Inc.  
A subsidiary of VTech Holdings Limited.  
TM & © 2021 LeapFrog Enterprises, Inc.  
All rights reserved.  
91-003937-004 (US)