



5" Wi-Fi High Definition Video Monitor

LF815HD



Parent Guide

This guide contains important information. Please keep it for future reference.

Visit our website leapfrog.com/en-gb/ for more information about products, downloads, resources and more.

Read our complete warranty policy online at <https://www.leapfrog.com/en-gb/legal>.



Scan the QR code for more online support:



Or go to leapfrog.com/en-gb/support

Important Safety Instructions

The applied name plate is located at the bottom of the Baby Unit's base. When using your equipment, basic safety precautions should always be followed to reduce the risk of fire, electric shock and injury, including the following:

- Follow all warnings and instructions marked on the product.
- Adult setup is required.
- CAUTION:** Do not install the Baby Unit at a height above 2 metres.
- This product is intended as an aid. It is not a substitute for responsible and proper adult supervision and should not be used as such.
- This product is not intended for use as a medical monitor.
- Do not use this product near water, for example, near to a bath, sink, swimming pool or shower.
- CAUTION:** Use only the battery provided. There may be a risk of explosion if a wrong type of battery is used for the Parent Viewer. The battery cannot be subjected to high or low extreme temperature and low air pressure at high altitude during use, storage or transportation. Disposal of battery in fire or a hot oven, mechanically crushing or cutting or the battery can result in an explosion. Leaving the battery in an extremely high temperature surrounding environment can result in an explosion or the leakage of flammable liquid or gas. Battery subjected to extremely low air pressure may result in an explosion or the leakage of flammable liquid or gas. Dispose of used batteries according to the instructions.
- Use only the adapters included with this product. Incorrect adapter polarity or voltage can seriously damage the product.
- Use only the adaptors and battery listed below.

Power adapter information:
Baby Unit Output: 5V DC 1A;
V-Tech Telecommunications Ltd.; Model: VT05EUK05100
Parent Viewer Output: 5V DC 2A;
V-Tech Telecommunications Ltd.; Model: VT07EUK05200

Rechargeable battery information:
Zhuhai Great Power Energy Co., Ltd.; Lithium battery,
3.7V 5000mAh; Model: GSP806090-5Ah-3.7V-1S1P

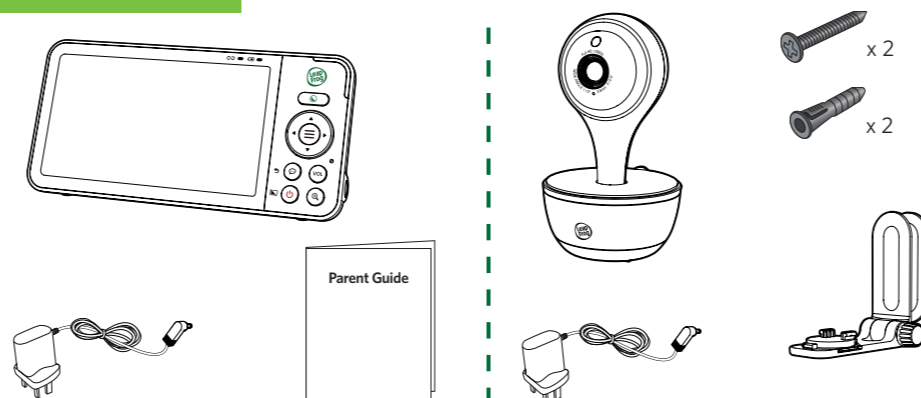
- The power adapters are intended to be correctly oriented in a vertical or floor mount position. The prongs are not designed to hold the plug in place if it is plugged into a ceiling, under-the-table or cabinet outlet.
- For pluggable equipment, the socket-outlet shall be installed near the equipment and shall be easily accessible.
- Unplug this product from the wall outlet before cleaning.
- Do not use liquid or aerosol cleaners. Use a damp cloth for cleaning. Do not modify the power adaptors or replace with other adaptors.
- Do not allow anything to rest on the power cords. Do not install this product where the cords may be walked on or crimped.
- This product should be operated only from the type of power source indicated on the marking label. If you are not sure of the type of power supply in your home, consult your dealer or electricity supply provider.
- Do not overload wall outlets or use an extension cord.
- Do not place this product on an unstable table, shelf, stand or other unstable surfaces.
- This product should not be placed in any area where proper ventilation is not provided. Slots and openings in the back or bottom of this product are provided for ventilation. To protect them from overheating, these openings must not be blocked by placing the product on a soft surface such as a bed, sofa or rug. This product should never be placed near or over a radiator or heat source.

- Never push objects of any kind into this product through the slots because they may touch dangerous voltage points or create a short circuit. Never spill liquid of any kind on the product.
- To reduce the risk of electric shock, do not disassemble this product, but take it to an authorised service facility. Disassembling or removing parts of the product other than via the battery door may expose you to dangerous voltages or other risks. Incorrect reassembling can cause electric shock when the product is subsequently used.
- You should test the sound reception every time you turn on the units or move one of the components.
- Periodically examine all components for damage.
- There is a very low risk of privacy loss when using certain electronic devices, such as baby monitors, cordless telephones, etc. **To protect your privacy, make sure the product has never been used before purchase, reset the baby monitor periodically by powering off and then powering on the units, and power off the baby monitor if you are not intending to use it for some time.**
- Children should be supervised to ensure that they do not play with the product.
- The small parts of this monitor can be swallowed by babies or small children. Keep these parts out of reach of children.
- The product is not intended for use by persons (including children) with reduced physical, sensory or mental capabilities, or lack of experience and knowledge, unless they have been given supervision or instruction concerning use of the appliance by a person responsible for their safety.

SAVE THESE INSTRUCTIONS

- Cautions**
- Use and store the product at a temperature between 0°C and 40°C.
 - Mishandling batteries can cause burn, fire or explosion hazards.
 - Do not expose the product to extreme cold, heat or direct sunlight. Do not put the product close to a heating source.
 - Batteries should not be exposed to excessive heat such as bright sunshine or fire.
 - Warning—Strangulation Hazard—Children have STRANGLED in cords. Keep this cord out of the reach of children. Do not remove warning label on the adapter cord.**
 - Never place the Baby Unit(s) inside the baby's cr+ib or playpen. Never cover the Baby Unit(s) or Parent Viewer with anything such as a towel or a blanket.
 - Other electronic products may cause interference with your baby monitor. Try installing your baby monitor as far away from these electronic devices as possible: wireless routers, radios, cellular telephones, intercoms, room monitors, televisions, personal computers, kitchen appliances and cordless telephones.

What's Included



Download LeapFrog Baby Care App

Start monitoring from anywhere.

Scan the QR code to download the free LeapFrog Baby Care mobile app, or search "LeapFrog Baby Care" on Apple App Store or Google Play Store.

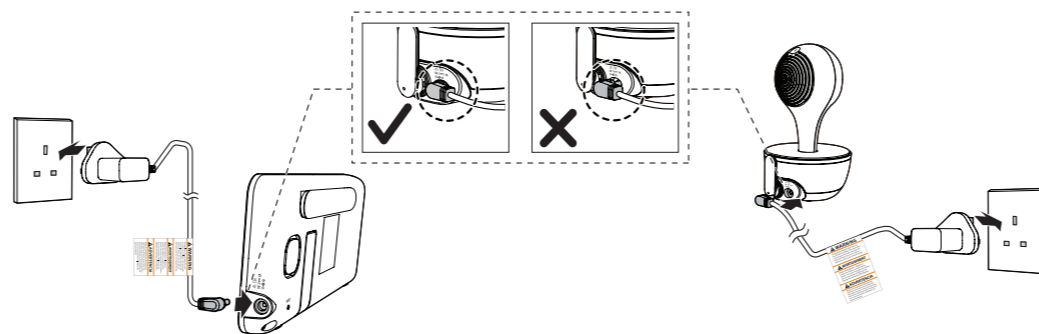


App Compatibility

- Android™ 6.0 or later
- iOS 12.0 or later.

Connect, Charge, and Power On the Baby Monitor

1. Connect the Baby Monitor



2. Charge the Parent Viewer Battery

Notes:

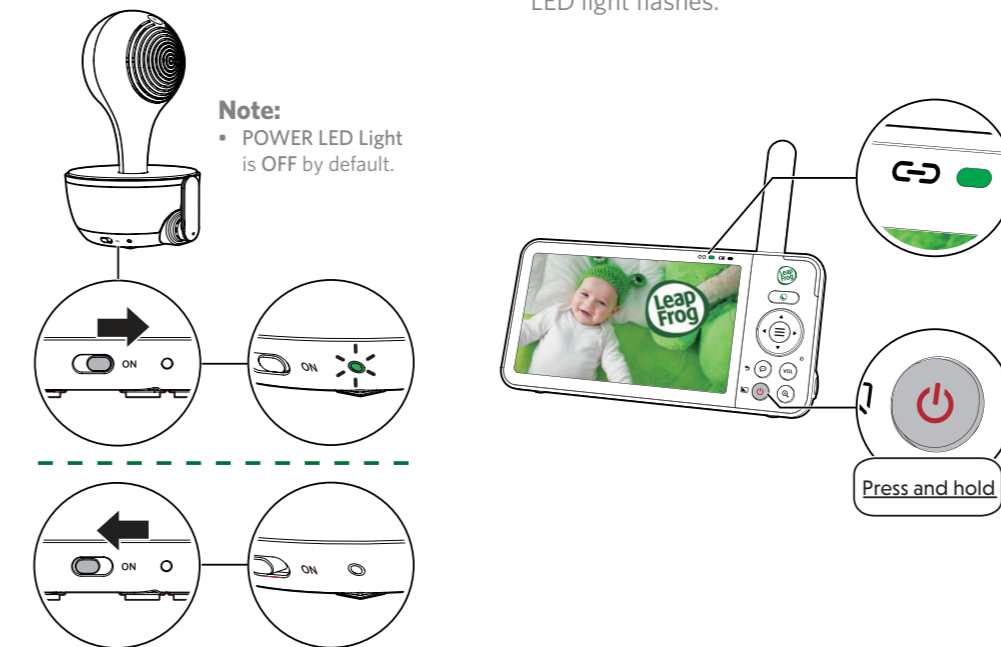
- Before using the baby monitor for the first time, charge the Parent Viewer battery for 12 hours. When the Parent Viewer battery is fully charged, the battery icon becomes solid .
- The standby time varies depending on your actual usage time and the age of the battery.

The battery icon on the screen indicates the battery status:

Battery Indicators	Battery Status	Action
The screen displays . The light flashes.	The battery is low in power and may only be used for a short time.	Charge without interruption (about 30 minutes).
The battery icon becomes solid .	The battery is fully charged.	To keep the battery charged, connect it to AC power when in use.

3. Power On or Off the Baby Monitor

- Slide the On/Off switch to **ON** to power on your Baby Unit.
- Press and hold until the welcome screen appears. The green LINK LED light flashes.

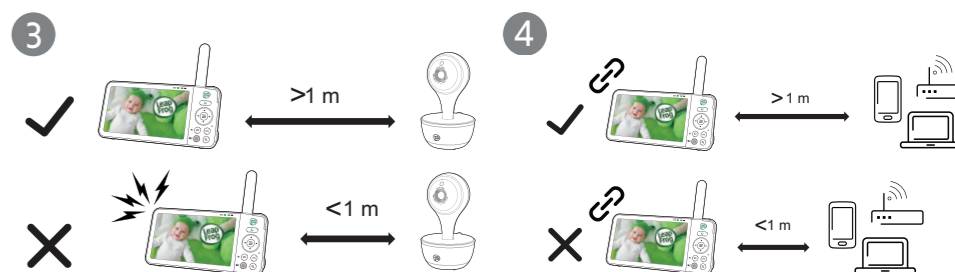


Note:
POWER LED Light is OFF by default.

4. Status Check

Once your Baby Unit and Parent Viewer are powered on and connected, your Parent Viewer displays video from Baby Unit, and the LINK LED lights steadily.

5. Positioning the Baby Monitor



Note:

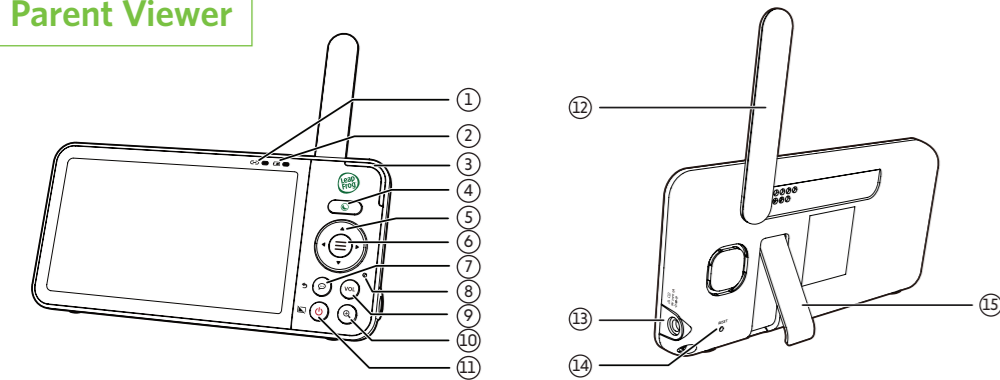
To avoid interference from other electronic devices, place your baby monitor at least 1 metre away from devices such as wireless routers, microwaves, mobile phones and computers.

Caution:

The default volume of your Parent Viewer is level 3, and the maximum volume is level 5. If you experience feedback from your baby monitor while positioning:
- Make sure your Baby Unit and Parent Viewer are more than 1 metre apart, **OR**
- Lower the volume of your Parent Viewer.

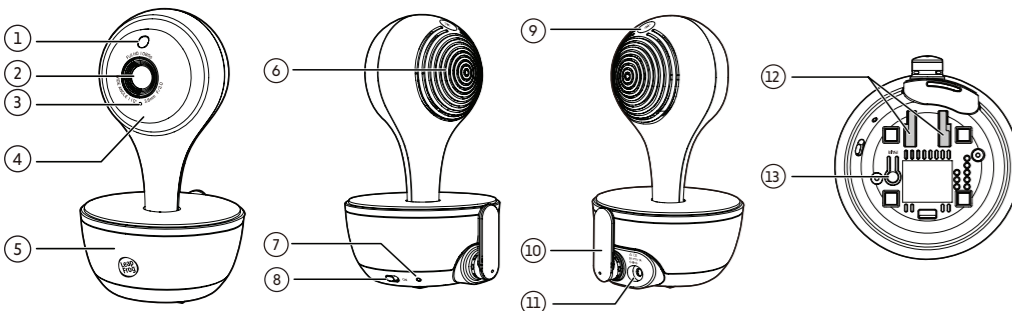
Overview

Parent Viewer



- | | | | | | |
|---|---|---|---|----|---------------------|
| 1 | ↔ Link LED light | 5 | ◀▶▶▶ Arrow Keys | 10 | 🔍 Zoom |
| 2 | 🔋 Battery LED light | 6 | ☰ Menu / Select | 11 | 🔌 Power / 📴 LCD Off |
| 3 | 3-level sound indicator light | 7 | 💬 Talk / ↻ Return | 12 | 📶 Antenna |
| 4 | 🌙 Night Mode quick set key | 8 | 🎤 Microphone | 13 | 🔌 Power jack |
| | <ul style="list-style-type: none"> Select black-and-white or colour night vision viewing mode. Adjust night light brightness. | 9 | VOL Volume | 14 | RESET |
| | | | <ul style="list-style-type: none"> View the volume adjustment bar. | 15 | Stand |

Baby Unit

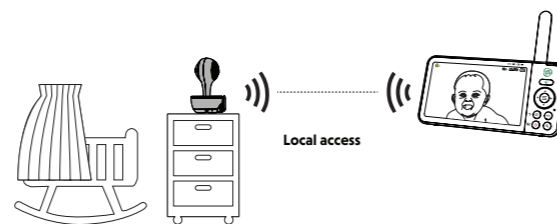


- | | | | |
|---|-----------------|----|--|
| 1 | Light sensor | 9 | ☀ Night light control key |
| 2 | Camera | | <ul style="list-style-type: none"> Press to turn the night light on or off. Tap and hold to adjust the brightness level. |
| 3 | Microphone | 10 | Antenna |
| 4 | Infrared LEDs | 11 | Power jack |
| 5 | Night light | 12 | Wall mount holes |
| 6 | Speaker | 13 | PAIR key |
| 7 | POWER LED Light | | <ul style="list-style-type: none"> The Parent Viewer and Baby Unit(s) provided are already paired. |
| 8 | On / Off switch | | |

Three Ways to Connect Your Baby Monitor

Direct mode

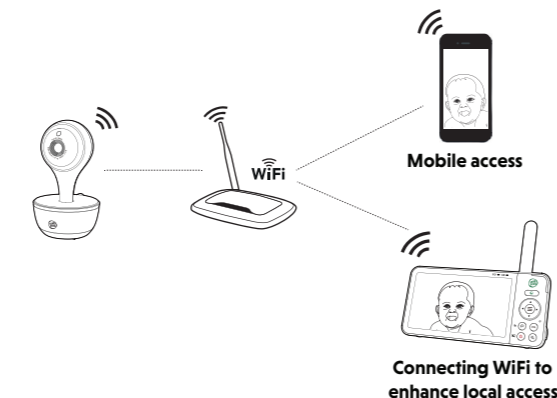
The Parent Viewer and the Baby Unit are pre-paired and can connect to each other directly in **Direct mode** by default, which allows you to stream live video right out of the box.



Wi-Fi Router mode

Router mode uses your home Wi-Fi network to connect your baby monitor system. It enhances your local access by extending connection range.

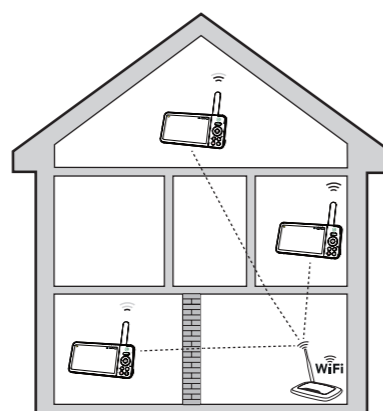
With the LeapFrog mobile app, your Wi-Fi router (not included) also provides Internet connectivity to your baby monitor system, allowing you to control your Baby Unit wherever you are.



Auto mode

The Parent Viewer will automatically select the most reliable connection mode (Direct or Wi-Fi) when connecting to the Baby Unit(s). Mobile app access will not be interrupted in Auto mode.

Test the Location



If you plan to install your Baby Unit to a designated location, and will use your home Wi-Fi network to connect your video monitor, test whether your selected monitoring areas have good Wi-Fi signal strength.

Check the Parent Viewer's Wi-Fi signal strength by going to:

⚙ > **Configure Wifi** > **Connection Status**.

Adjust the direction and distance between your Baby Unit, Parent Viewer, and Wi-Fi router until you have identified a suitable location with good connection.

Protect Your Privacy and Online Security

LeapFrog cares about your privacy and peace of mind. That's why we've put together a list of industry-recommended best practices to help keep your wireless connection private and your devices protected when online.

Ensure your wireless connection is secure

- Before installing a device, ensure your router's wireless signal is encrypted by selecting the "WPA2-PSK with AES" setting in your router's wireless security menu.

Change default settings

- Change your wireless router's default wireless network name (SSID) to something unique.
- Change default passwords to unique, strong passwords. A strong password:
 - Is at least 10 characters long.
 - Does not contain dictionary words or personal information.
 - Contains a mix of uppercase letters, lowercase letters, special characters and numbers.

Keep your devices up to date

- Download security patches from manufacturers as soon as they become available. This will ensure you always have the latest security updates.

- If the feature is available, enable automatic updates for future releases.

Disable Universal Plug and Play (UPnP) on your router

- UPnP enabled on a router can limit the effectiveness of your firewall by allowing other network devices to open inbound ports without any intervention or approval from you. A virus or other malware program could use this function to compromise security for the entire network.

For more information on wireless connections and protecting your data, please review the following resources from industry experts:

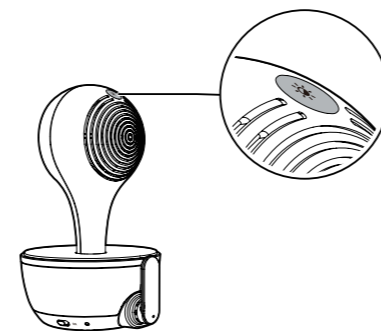
- Federal Communications Commission: Wireless Connections and Bluetooth Security Tips - www.fcc.gov/consumers/guides/how-protect-yourself-online
- U.S. Department of Homeland Security: Before You Connect a New Computer to the Internet - www.us-cert.gov/ncas/tips/ST15-003
- Federal Trade Commission: Using IP Cameras Safely - <https://www.consumer.ftc.gov/articles/0382-using-ip-cameras-safely>
- Wi-Fi Alliance: Discover Wi-Fi Security - <http://www.wi-fi.org/discover-wi-fi/security>

Night Light

Want a softer hue from the Baby Unit's night light to relax your little one? You can control the brightness of its glow remotely from your Parent Viewer, or directly on the Baby Unit.

Adjust the night light on Baby Unit

- Tap the **Night light control key** 🌙 located on the top of Baby Unit to turn on and turn off the night light.
- Tap and hold the **Night light control key** 🌙 to adjust the night light's brightness level.



Note:

- If Auto Brightness has been pre-selected, any adjustment in night light brightness (either on Baby Unit or Parent Viewer) will automatically turn off Auto Brightness mode and switch to the fixed brightness level.

General Product Care

To keep this product working well and looking good, follow these guidelines:

- Avoid placing it near heating appliances and devices that generate electrical noise (for example, motors or fluorescent lamps).
- DO NOT expose it to direct sunlight or moisture.
- Avoid dropping the product or treating it roughly.
- Clean with a soft damp cloth.
- DO NOT immerse the Parent Viewer and the Baby Unit in water and do not clean them under running water.
- DO NOT use cleaning spray or liquid cleaners.
- Make sure the Parent Viewer and the Baby Unit are dry before you connect them to the mains again.
- Clean the USB charging port of dust, dirt, and lint regularly.

Storage

If the HD video monitor will not be used for an extended period of time, store the Parent Viewer, the Baby Unit, and the adaptors in a cool and dry place.

Customer Service and Product Warranty



Thank you for choosing this quality product from VTech.

- The product detailed above is covered by a one year warranty from the date of purchase, against any defects in materials or workmanship.
- The product may be returned to the place of purchase. Alternatively the product can be returned to VTech Electronics Europe Plc (see address below), with proof of purchase, without proof of purchase no replacement will be provided.
- VTech Electronics Europe Plc will examine the product and if it is found to be defective due to faulty materials or workmanship, will replace the product at their discretion.
- If the product covered by this warranty is damaged due to misuse, modification or unauthorized repair, or because of faulty batteries, battery discharge or incorrect electrical connections, then this warranty becomes void.
- This warranty is personal to the original purchaser and is not transferable.
- Breakages to the LCD screen are not covered by the warranty.
- Products returned to VTech Electronics Europe Plc, should be sent to the address shown below and packed carefully to avoid damage in transit. Please do not include batteries or adaptors. Please include details of the fault together with your name and address, contact phone number and/or email address.
- To keep an online record of your warranty, please register your product online at www.vtech.co.uk/clubvtech

VTech Electronics Europe Plc, c/o XPO Logistics, Warehouse 350, Cat & Fiddle Lane, West Hallam, DE7 6HE
THIS WARRANTY IS OFFERED AS AN EXTRA BENEFIT AND DOES NOT AFFECT CONSUMERS' STATUTORY RIGHTS.

This warranty is valid for the UK and Ireland only. For products purchased outside the UK and Ireland, please contact your local distributor or place of purchase.

IMPORTANT

Please retain this booklet with your sales receipt as proof of the date of purchase.

Manufacturer: VTech Telecommunications Ltd, 23/F., Tai Ping Industrial Centre, Block 1, 57 Ting Kok Road, Tai Po, Hong Kong.

Importer: VTech Electronics Europe Plc, Napier Court, Abingdon Science Park, Abingdon, Oxon, OX14 3YT.

Android™ and Google Play™ are trademarks of Google Inc.

App Store is a trademark of Apple Inc., registered in the U.S. and other countries.

iOS is a trademark or registered trademark of Cisco in the U.S. and other countries and is used under license.

Disposal of Batteries and Product



The crossed-out wheeled bin symbols on products and batteries, or on their respective packaging, indicates they must not be disposed of in domestic waste as they contain substances that can be damaging to the environment and human health.

The chemical symbols Hg, Cd or Pb, where marked, indicate that the battery contains more than the specified value of mercury (Hg), cadmium (Cd) or lead (Pb) set out in Battery Directive (2006/66/EC).

The solid bar indicates that the product was placed on the market after 13th August, 2005.

Help protect the environment by disposing of your product or batteries responsibly.

Declaration of Conformity

This product is intended for use within Europe and UK. This equipment complies with the essential requirements to EU's Radio Equipment Directive (2014/53/EU) and the UK's Radio Regulations 2017 on radio systems and telecommunication equipment. LeapFrog Enterprises, Inc., a subsidiary of VTech Holdings Limited hereby declares that LF815HD is in compliance with the essential requirements and other relevant provisions of EU's Radio Equipment Directive (2014/53/EU) and UK's Radio Equipment Regulations 2017.

The Declaration of Conformity for the LF815HD is available from leapfrog.com/en-gb/legal/euodoc.



Customer Support



Find the answer to your questions. Get assisted at your own pace using our knowledge-rich full Online Manual, or contact Customer Support with your inquiries.



Scan the QR code to access the Online Support Page or visit leapfrog.com/en-gb/support.

Technical Specifications

Technology	Wi-Fi 2.4GHz 802.11 b/g/n
Channels	1 - 13 (2412 - 2472 MHz)
Internet Connection	Minimum Requirement: 1.5 Mbps @ 720p or 2.5 Mbps @ 1080p upload bandwidth per Baby Unit
LCD	5" Colour LCD (IPS 1280x720 pixels)
Power requirements	Parent Viewer: 3.7V 5000mAh Lithium-ion battery Baby Unit power adapter: Output: 5V DC @ 1A Parent Viewer power adapter: Output: 5V DC @ 2A
Maximum power used by the transmitter	0.1W (100 mW)

Credits:

The Background Noise sound file was created by Caroline Ford, and is used under the Creative Commons license. The Stream Noise sound file was created by Caroline Ford, and is used under the Creative Commons license. The Crickets At Night sound file was created by Mike Koenig, and is used under the Creative Commons license. The Heart Beat sound file was created by Zorabadeu, and is used under the Creative Commons license.



Specifications are subject to change without notice. © 2022 LeapFrog Enterprises, Inc. a subsidiary of VTech Holdings Limited. All rights reserved. 06/22. LF815-XHD_UK_QSG_V1.

