

Leapster™ Learning Game System Library

Leapster Games also work with the Leapster L-Max™ Handheld for learning on the go.



© Disney Enterprises, Inc.

Disney Princess

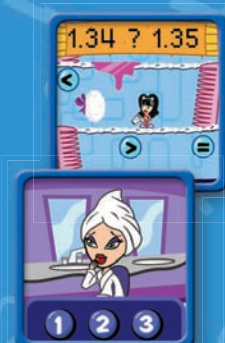
This enchanting educational game features the beloved Disney Princesses in five animated activities that teach fundamental early reading and math skills.



TM & © MGA Entertainment, Inc.
All Rights Reserved

Bratz™

Experience the funky and fabulous Bratz™ girls in a whole new way—through fun learning games! Play five games and learn essential skills for third and fourth grade!



© Disney Enterprises, Inc./
Pixar Animation Studios

The Incredibles™

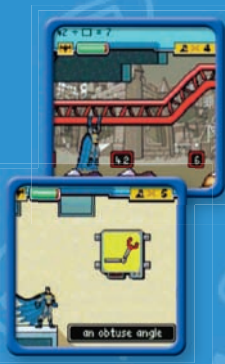
Meet the Incredibles and engage in an extraordinary battle of wits and superpowers. This educational game teaches 2nd and 3rd grade skills including spelling, grammar, math and problem solving.



© 2005 DC Comics
All Rights Reserved

Batman™

Venture into four foreboding Gotham City worlds to help *The Batman* battle villains in this dynamic side-scrolling game. Learn essential math skills for third and fourth grade!



Accessories for your Leapster™ handheld



Recharging System

The Leapster and Leapster L-Max™ Recharging System is the fast, kid-friendly way to recharge the Leapster learning game system! It's easy! Just insert the included rechargeable battery pack, and then dock Leapster handheld to recharge the batteries. In about 4 hours, you're ready for more action-packed learning fun! An AC adapter is also included, so you can power the Leapster handheld directly from an AC outlet!

Includes:

- Recharging dock
- AC adapter
- Rechargeable battery pack

Leapster Backpacks

These protective backpacks hold all of your Leapster gaming gear, including the Leapster handheld, AC adapter, TV cables and 10 cartridges!



Leapster system, cartridges, and accessories sold separately.



Parent Guide



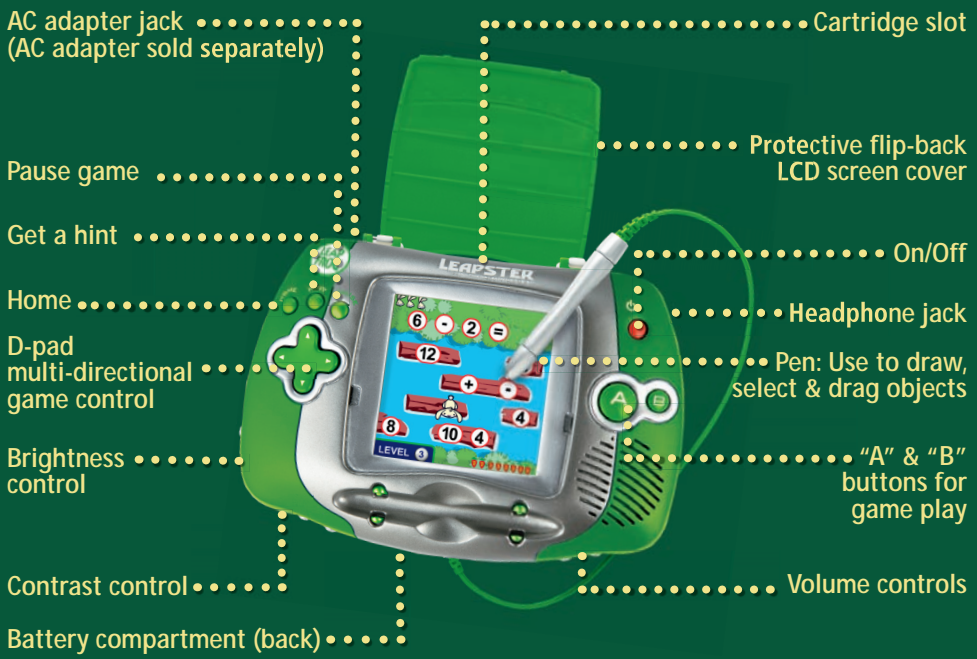
www.leapsterworld.com

Actual package art may vary. All titles may not be available in all markets.
Images are representative of gameplay and do not reflect actual screenshot pixelation.

This guide contains important information.
Please keep it for future reference.

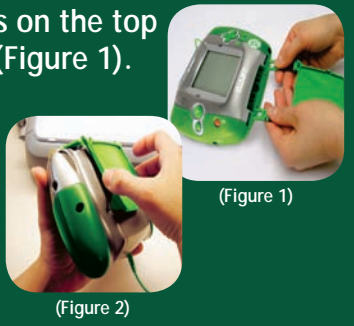
Welcome to the Leapster™ Learning Game System!

The Leapster learning game system combines learning skills for preschool through 4th grade with the best of video game play. Children become engaged in the games and want to play them again and again! Best of all, with the Leapster handheld, children can play and learn anywhere!



Attaching Protective LCD Screen Cover

1. Snap the cover fastening tabs into the slots on the top edge of the LEAPSTER handheld as shown (Figure 1). Make sure the tabs are fully inserted.
2. Flip back the screen cover.
3. Secure the cover to the back of the LEAPSTER handheld as shown (Figure 2).

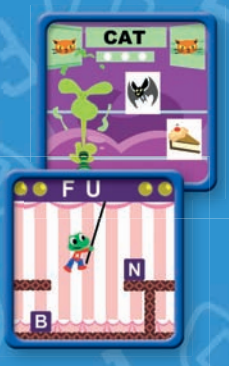


Check Out the Ever-Growing Leapster™ Learning Game Library!



Kindergarten

Welcome to Carnival Marvel! Step right up to play 6 learning games that teach over 45 essential reading and math skills for kindergarten.



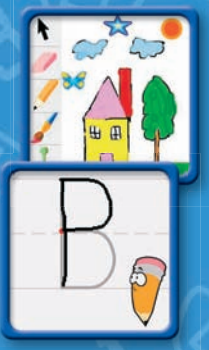
1st Grade

Join Leap, Lily and Tad at the Beach Boardwalk, and play 6 learning games that teach over 70 essential reading and math skills for 1st grade.



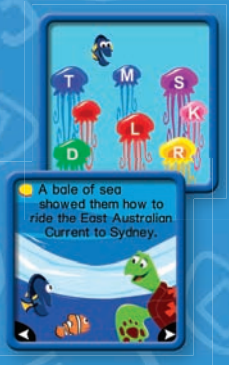
Mr. Pencil's Learn to Draw and Write

Dozens of art tools and more than 100 step-by-step lessons let children draw, write and create anything they can imagine.



Finding Nemo

Enter tropical waters to experience love, laughter, fear and friendship in Disney/Pixar's *Finding Nemo*. This electronic book teaches pre-K and kindergarten skills including science, phonics, reading and math.



Dora the Explorer™

¡Hola! Help Dora and Boots rescue animals and learn 45 pre-kindergarten and kindergarten skills! ¡Vamonos! Let's go!



Letter Factory™ Video

Join Leap, Lily, Tad and Professor Quigley on this interactive video adventure to the Letter Factory, where new letters learn their sounds!

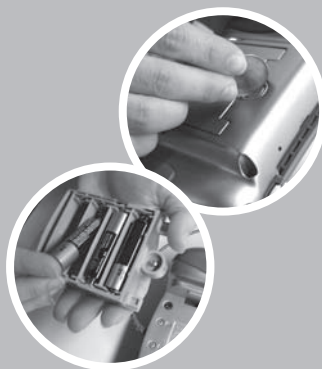


Actual package art may vary. All titles may not be available in all markets. Images are representative of gameplay and do not reflect actual screenshot pixelation.

GETTING STARTED:

Battery Installation:

- Locate the battery compartment on the back of the handheld.
- Loosen the screw on the battery compartment with either a screwdriver or a coin.
- Slide out the battery tray.
- Insert 4 AA (called LR6 in some countries) alkaline batteries.
- Slide the tray back in with the batteries facing down.



Getting Started

1. Press the on/off button to begin.
2. When prompted, select your country (required the first time only).

Game Selection Screen

The LEAPSTER™ handheld includes an educational game and a built-in digital art studio. To start, touch an activity icon with the pen, or use the arrow pad to scroll through and highlight games, then press the “A” button.

To turn off the background music, touch the music note tab. Select “music on” or “music off,” and then “OK” to confirm. The setting will return to “music on” each time the unit is turned on.

Play the Rabbit River
game



..... Create digital art

..... Tour the Leapster learning
game library

Table of Contents

Getting Started with the LEAPSTER™ handheld 1

The LEAPSTER Advantage..... 4

Included Activities

 Rabbit River Math Game 6

 Rabbit River Reading Game 7

 The Color/Colour Corral Art Studio..... 8

Touch Screen Calibration 9

Country Selection 9

Safety, Troubleshooting and Warranty Information 10



THE LEAPSTER™ HANDHELD ADVANTAGE

Introduction

The LEAPSTER learning game system combines preschool through 4th grade learning with the best of video game play. Children become so engaged in the games that they want to play them again and again—and the more they play, the more they learn!

Best of all, with the LEAPSTER handheld, children can learn anytime, anywhere—in the car or in the kitchen, before school or just before bedtime. The LEAPSTER handheld literally puts the power of learning in the palm of your child's hand.

A Multisensory Approach to Learning

The LEAPSTER learning game system pioneers a new way for children to learn—through an animated, multisensory learning environment.


- ◆ Animated sequences visually model the skills and concepts being taught. Correct answers are greeted by rewards, while incorrect answers are supported by animations that guide players toward the right answer. When needed, game play will slow down and allow more time for a child to comprehend the skill or concept being introduced.
- ◆ The audio component provides additional support as players listen to the sounds associated with on-screen visuals. Spoken directions help guide the game play and numerous audio hints help players better understand each concept or skill.
- ◆ Manipulating the game input controls, the pen (used to select and drag items) and the directional arrow buttons (used to move characters around the screen) facilitate game play and help develop fine motor skills.

Learning at All Levels

The Rabbit River Math and Reading Games advance through four levels of difficulty, adjusting the challenge from preschool through 4th grade. Each level increases the complexity of both the skills being taught and the dexterity needed to play the games. Players can select or change the level of difficulty at the start of each game or after each round.

Secret Codes and www.leapsterworld.com

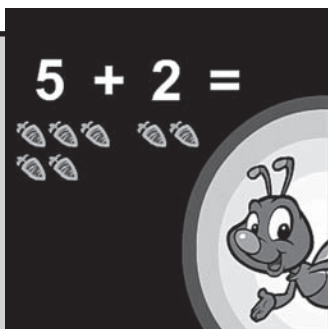
The Web site www.leapsterworld.com is the place to go to learn fun game tips or to unlock special surprises with secret codes earned while playing the games. Secret codes are built into many LEAPSTER™ games that appear as a player uses the LEAPSTER handheld. These codes earn players a special downloadable surprise when they log on to www.leapsterworld.com.

To view a code in the included game, players simply touch the  located on the game selection screen at any time. The child can then log on to www.leapsterworld.com and get started.

How Tutorials Work

The goal of a tutorial is to provide a strategy for breaking down complex skills into smaller parts.

A tutorial is activated when the player either presses the *Hint* button or selects a number of incorrect answers. For example, at the third level of the Rabbit River game, if a player has answered the math equation incorrectly several times in a row, Edison will visually show the equation, then prompt the child to count both groups of carrots to determine the total. Edison prompts the player to try again. If the player succeeds, then game play continues. If not, then another tutorial is provided.



RABBIT RIVER MATH

HOW TO PLAY

The hungry rabbits want to cross the river to eat Leap's harvest of vegetables. Players use arrow buttons to help the rabbits hop onto logs with shapes, numbers and mathematical equations! The object of the game is to get all the rabbits across the river by responding to the questions. **Scoring:** Players collect bonus carrots.



WHAT'S BEING TAUGHT?

Numeration: Recognizing numerals, making the connection between numerals and values, comparing and ordering numbers, counting, recognizing basic math operators and functions, and solving math equations.

Level 1: Players identify numbers and distinguish numerals from letters and shapes; count in sequence from 1 to 10.

Level 2: Players count in sequence from 1 to 99; skip count by 2s, 5s, and 10s; and count backward from 10.

Level 3: Players identify addition and subtraction symbols and use them to create and solve addition and subtraction problems.

Level 4: Players identify the symbol for multiplication and use it to create and solve multiplication problems.

WHY IS THAT IMPORTANT?

It may take some time for children to understand that numbers are symbols for amounts. Once they do, they can begin to compare and order numbers. Sequential counting further reinforces the progression of numbers from fewer to many, while skip counting helps children recognize number patterns, a prerequisite to all future work in mathematics.

Try This at Home:

- ◆ Look for numbers everywhere you go: on buildings and street signs, or at the grocery store. Ask your child to identify the numbers in his or her age, address and telephone number.
- ◆ Use snacks, such as nuts or raisins, to practice counting, adding and subtracting from 1 to 10, and skip counting by 2s, 5s, or 10s to 50.



RABBIT RIVER READING

HOW TO PLAY

The hungry rabbits want to cross the river to eat Leap's harvest of vegetables. Players use arrow buttons to help the rabbits hop onto logs with letters. The object of the game is to get all the rabbits across the river by responding to the questions. **Scoring:** Players collect bonus carrots.



WHAT'S BEING TAUGHT?

Letters, Sounds, Spelling: Learning the letters of the alphabet and what sounds they represent, as well as spelling 3- to 5-letter words.

Level 1: Players must identify letters by name and match letters with sounds.

Level 2: Players must build 3- and 4-letter words with the silent *e* rule. Visual clues are provided.

Level 3: Players must spell 3- and 4-letter words with the silent *e* rule. Visual clues are not provided.

Level 4: Players must spell 4- and 5-letter words with consonant blend and complex vowel rules. Visual clues are not provided.

WHY IS THAT IMPORTANT?

Once children associate printed letters to sounds, they can begin to sound out words for reading and spelling. Reading blends letters and sounds together. Spelling breaks these sounds down to letters. Phonetic spelling begins with *regular* patterns, such as *c-a-p*, in which each letter stands for its own sound. Rules are then applied. For example, silent *e* signals that a preceding vowel has its long-vowel sound. A child learns how *cap* becomes *cape*, *pin* becomes *pine*, and so on.

Try This at Home:

- ◆ Build word families by changing the first letter or sound in words with magnetic letters or letter cards, for example, *den*, *hen*, *men*, *pen* and *ten*.
- ◆ Write the consonant blends *bl*, *cl*, *fl*, *pl*; *br*, *cr*, *dr*, *gr*, *pr*, *tr*; *sm*, *sp*, *sn*, *sw*, and *st* on individual paper plates. Spread them across the floor and take turns with your child throwing a penny into one of the plates. Each of you must think of a word that begins with that blend. Say it, spell it and use it in a sentence!



THE COLOR/COLOUR CORRAL ART STUDIO

HOW TO PLAY

Players create their own pictures—paint, draw, add animated stamps and even weather effects.



Touch to select a background, including a blank canvas.



Touch to add weather options—day and night, snow and rain.



Add stamps to a child's pictures. Many animate!



Touch to use a paintbrush, a paint bucket, a crayon, a magic wand or an eraser.



Touch to select a color/colour or pattern.



Touch to undo the last action.



WHAT'S BEING TAUGHT?

Creativity: Children use their imaginations and explore new ways of seeing things. They can create a farm scene with a polka-dot barn and plaid grass. With so many options (and none of them wrong!) your child is free to explore.

Science and Nature: Players can put animals in their natural habitats: on the farm and on the pond. By adding weather and time of day to scenes, players can also consider the effects of atmosphere on the environment.

WHY IS THAT IMPORTANT?

Imagination and creativity are important qualities that can be encouraged and enhanced during early childhood. By allowing your child to put “a round peg in a square hole,” he or she is given “permission” to investigate all sorts of possibilities and develop creative problem-solving strategies.

Try This at Home:

- ◆ Make a mural of another habitat: the ocean, the rainforest, the North or South Pole. Explore the real-life plants and animals that live there, as well as the climate in that place.



TOUCH SCREEN CALIBRATION

Your LEAPSTER™ handheld touch screen has already been calibrated for use, but if you should see either example below, you may adjust this calibration yourself.

- Lines drawn with the pen appear to be offset from the location of the pen tip.
- Objects you are trying to select are not being chosen.

Should this happen, follow these steps to calibrate the touch screen on your LEAPSTER handheld:

- 1) Ensure that a cartridge is NOT inserted.
- 2) Press the power button to turn on your system.
- 3) When the “game selection screen” appears, press these buttons all at the same time:
 - the “B” button
 - the “Hint” button
 - the “Home” button
- 4) You’ll see a message that says “Press the “A” button to begin.”
- 5) Follow the on-screen instructions.

COUNTRY SELECTION

Selecting your country of residence adjusts the phonetic pronunciation of some letters to better match the country’s language.

If you need to change your country selection, follow these steps:

- 1) Ensure that a cartridge is not inserted.
- 2) Press the power button to turn on your system.
- 3) When the “game selection screen” appears, press these buttons all at the same time:
 - the “Home” button
 - the “D-pad right arrow” button
 - the “B” button
- 4) Follow the on-screen instructions.

Care and Maintenance:

- Keep unit away from foods and beverages.
- Clean with a slightly damp cloth (cold water).
- Do not use soap or detergent.
- Never submerge the unit in water.
- Remove batteries during prolonged storage.
- Avoid prolonged exposure to extreme temperatures and direct sunlight.

Battery Information:

Requires 4 AA (called LR6 in some countries) alkaline batteries, not included.

Battery Safety:

Batteries are small objects. Replacement of batteries must be done by adults.

Follow the polarity (+/-) diagram in the battery compartment.

Promptly remove dead batteries from the unit.

Dispose of used batteries properly.

Remove batteries for prolonged storage.

Only recommended batteries of the same type are to be used.

DO NOT incinerate used batteries.

DO NOT dispose of batteries in fire, as batteries may explode or leak.

DO NOT mix old and new batteries or types of batteries (i.e. alkaline/standard).

DO NOT recharge non-rechargeable batteries.

DO NOT short-circuit the supply terminals.

Sécurité relative aux piles

Les piles sont des objets de petite taille. Le remplacement des piles doit être effectué par un adulte.

Respectez le schéma de polarité (+/-) reproduit dans le compartiment des piles.

Enlevez rapidement les piles usagées du produit.

Suivez les procédures adéquates pour vous débarrasser des piles usagées.

Retirez les piles en cas de non-usage prolongé.

Utilisez uniquement des piles du type recommandé.

NE PAS incinérer les piles usagées.

NE PAS jeter les piles au feu, car elles peuvent exploser ou fuir.

NE PAS mélanger piles usagées et piles neuves, ni différents types de piles (c'est-à-dire alcalines/standard).

NE PAS recharger des piles non rechargeables.

NE PAS court-circuiter les bornes d'alimentation.

AC Adapter:

1. Use only a 9V D.C. 700mA AC adapter.
2. Note: The transformer is not a toy. Disconnect the toy from the transformer before cleaning, or performing any kind of maintenance procedures.

TROUBLESHOOTING	
Symptom:	Try this:
Toy does not turn on or does not respond	<ul style="list-style-type: none"> • Make sure batteries are correctly installed • Make sure battery cover is securely attached • Remove batteries and put them back in • Clean battery contacts with pencil eraser • Install new batteries
Toy makes strange sounds or behaves erratically	<ul style="list-style-type: none"> • Clean battery contacts with pencil eraser • Install new batteries
Toy makes improper responses	<ul style="list-style-type: none"> • Clean battery contacts with pencil eraser • Install new batteries
Display stops working	<ul style="list-style-type: none"> • Adjust brightness/contrast controls • Install new batteries

U.S. Consumer Service Contact:

Please visit our U.S. Consumer Support Web site at: <http://www.leapfrog.com/support>, or our Canada Consumer Support Web site at: <http://lfcanda.custhelp.com>, 24 hours a day. You can search for frequently asked questions, review previous questions, or submit a question to our support staff via e-mail.

U.S./Canada Office:

Telephone: (800) 701-LEAP (5327)

Hours: Monday through Saturday, 5:00 AM to 7:00 PM, Pacific time.

U.K. Consumer Service Contact:

Please visit our U.K. Consumer Support Web site at <http://leapfroguk.custhelp.com>, 24 hours a day. You can search for frequently asked questions, or submit a question to our support staff via e-mail.

U.K. Office:

Tel: 0800 169 5435

Eire: 00 44 1702 200244

Hours: Monday through Friday, 9:00 AM to 5:00 PM.

IMPORTANT: If you have a problem with this product, return it to the retailer where the product was purchased for exchange. If the retailer is unable to assist you for any reason, contact LeapFrog Consumer Services. If our service representative is unable to help you resolve the problem, you will be given instructions on how to replace the product and an authorization number. Returns must have a return authorization number (RMA) to be accepted at our warehouse. If you need replacement parts for this product, please contact LeapFrog Consumer Services.

WARNING: Changes or modifications to this unit not expressly approved by the party responsible for compliance could void the user's authority to operate the equipment.

AVERTISSEMENT : Tout changement ou modification de cette unité n'ayant pas été expressément approuvé par les parties responsables de la conformité entraîne l'annulation du droit de l'utilisateur à exploiter l'équipement.

Note:

This device complies with Part 15 of the FCC rules. Operation is subject to the following two conditions:

- 1) This device may not cause harmful interference, and
- 2) This device must accept any interference received, including interference that may cause undesired operation.

This equipment has been tested and found to comply with the limits for a Class B digital device pursuant to Part 15 of the FCC rules. These limits are designed to provide reasonable protection against harmful interference to radio communications. Because this toy generates, uses, and can radiate radio frequency energy, there can be no guarantee that interference will not occur. If this toy does cause interference to radio or television reception (you can check this by turning the toy off and on while listening for the interference), one or more of the following measures may be useful:

- Reorient or relocate the receiving antenna
- Increase the separation between the toy and the radio or the TV
- Consult the dealer or an experienced TV-radio technician for help

This Class B digital apparatus meets all the requirements of the Canadian Interference-Causing Equipment Regulations.

Cet appareil numérique de la classe B respecte toutes les exigences du Règlement sur le matériel brouilleur du Canada.

Warranty Information

This LeapFrog® product is warranted only to the original purchaser for a period of three months from the original purchase date, under normal use and service, against defective workmanship and material. This warranty is void if the product has been damaged by accident or unreasonable use, immersion in water, neglect, abuse, battery leakage or improper installation, improper service, or other causes not arising out of defects in workmanship or materials of the product. All warranty claims are subject to: (1) LeapFrog being notified of the warranty claim within the warranty period, (2) LeapFrog verifying the existence of a defect in the product and (3) receipt of valid proof of your purchase date.

Before returning a product for any reason, please notify the LeapFrog Consumer Service Department. If the service representative is unable to solve the problem, you will be provided with instructions as to how to go about having the unit repaired or replaced if it is under warranty. Return of a product under warranty is governed by the following rules—If LeapFrog believes that there may be a defect in materials or workmanship and LeapFrog confirms your purchase date, LeapFrog will provide you with prepaid shipping instructions for returning the product. Otherwise, you must return your product, shipping prepaid and with proof of purchase date, as instructed by a LeapFrog service representative.

In the event that a product under warranty is repaired or replaced, the replacement will be covered under the original warranty or for 30 days, whichever is longer. Repair or replacement is your exclusive remedy, and LeapFrog's exclusive liability, under this warranty. Replacement may consist of replacing the product with the same product or with a different product of the same value. LeapFrog shall not be liable for any incidental or consequential damages for the breach of any warranty on this product. Any implied warranty of merchantability or fitness for a particular purpose on this product is limited to the duration of this warranty. Some states do not allow the exclusion or limitation of incidental or consequential damages, or limitation on how long an implied warranty lasts, so the above limitations or exclusions may not apply to you. This warranty gives you specific legal rights and you may also have other rights, which vary from state to state and country to country.

Canada: In addition to the above-referenced warranty, the hardware component shall be free from defects in material and workmanship for 12 months. The above express warranty and any applicable implied warranties are limited in duration to the warranty periods described above. Some provinces do not allow limitations on how long an implied warranty lasts, or the exclusion of incidental or consequential damages, so the above limitations do not apply to you. You may also have other rights, which vary from province to province.

U.K.: In addition to the above-referenced warranty, this LeapFrog product shall be free from defects in material and workmanship for 12 months where the 3-month warranty period is not valid. The above express warranty and any applicable implied warranties are limited in duration to the warranty periods described above. You may also have other rights under U.K. law, which this warranty does not limit.

LEAPFROG, the LeapFrog Logo, LEAPSTER, LEAPSTER L-MAX, TALKING WORDS FACTORY and LETTER FACTORY are registered trademarks or trademarks of LeapFrog Enterprises, Inc. Copyright © 2005 LeapFrog Enterprises, Inc. All rights reserved.

U.S. Patents Pending

Visit our fun-filled Web site at: www.leapsterworld.com

For ages 4-10 years.

Convient aux enfants de 4 ans à 10 ans.

605-10673-A